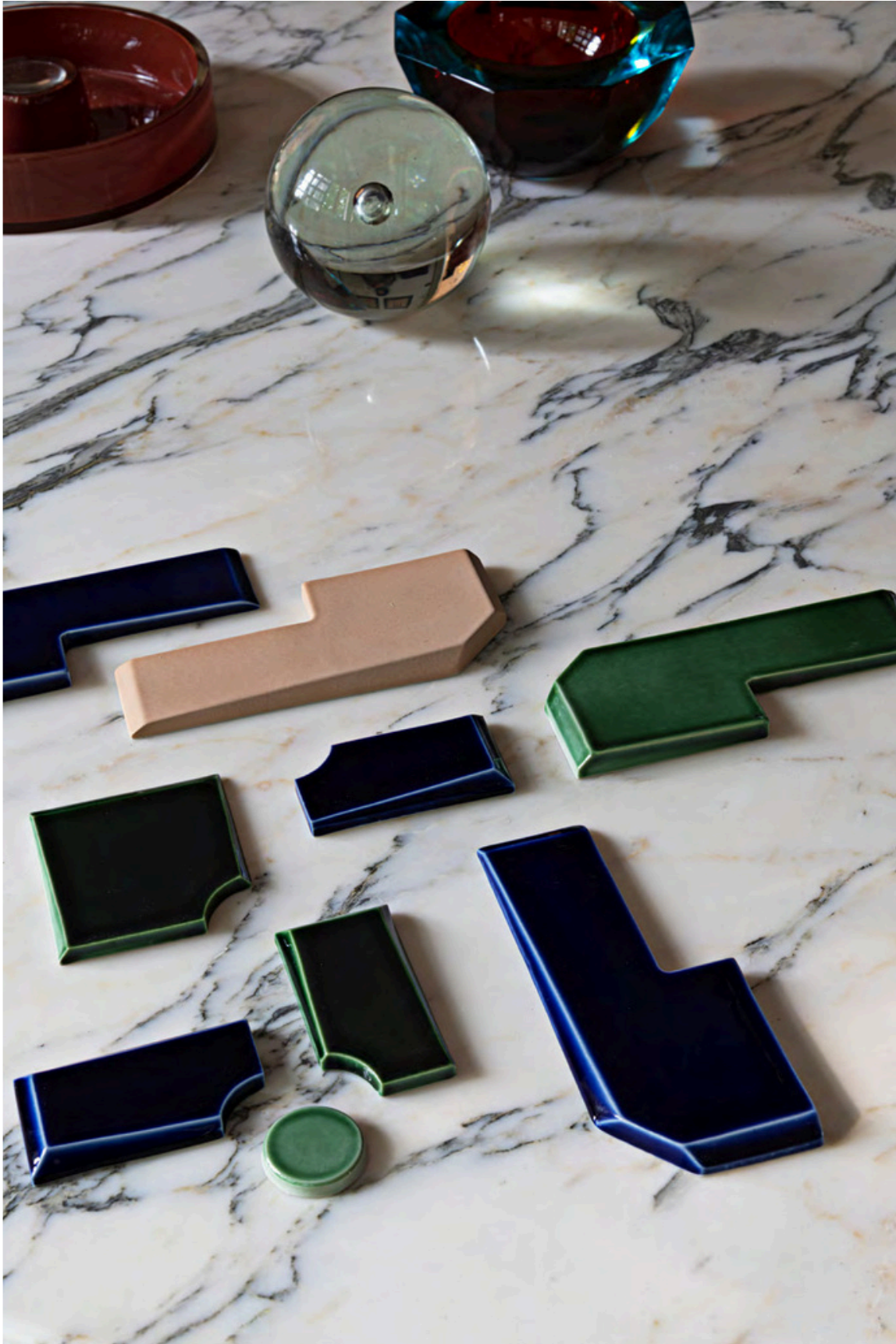


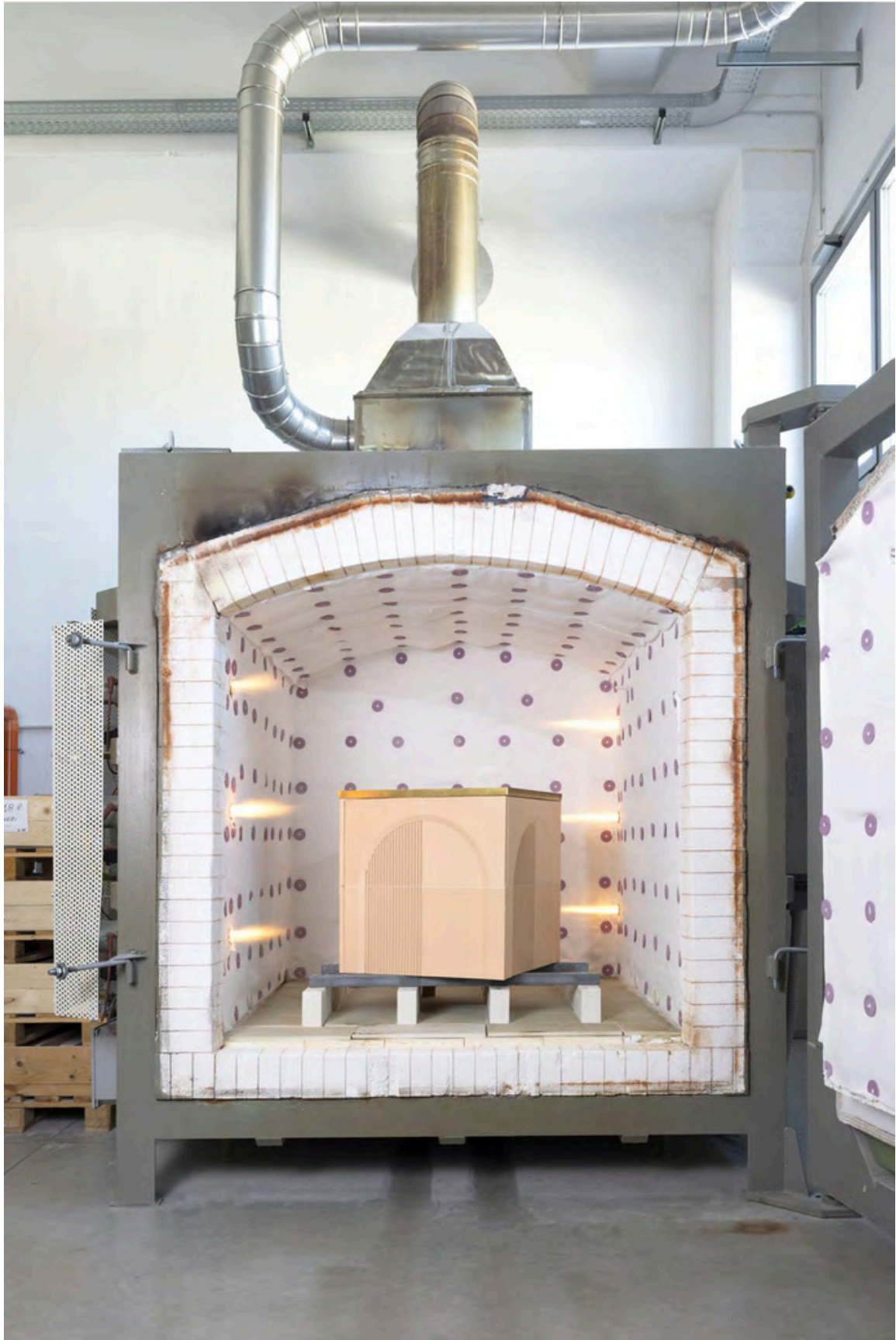
VERONA

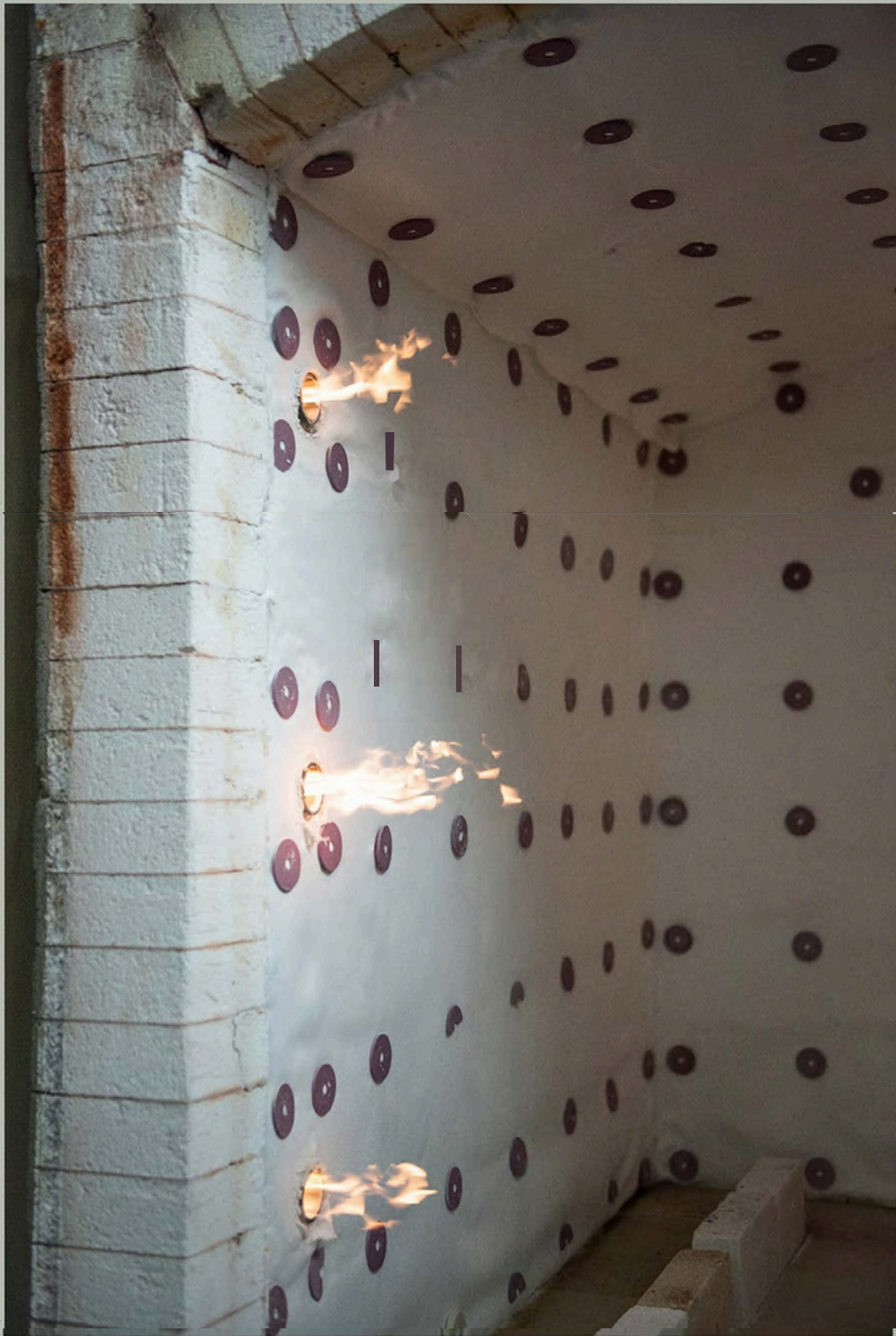


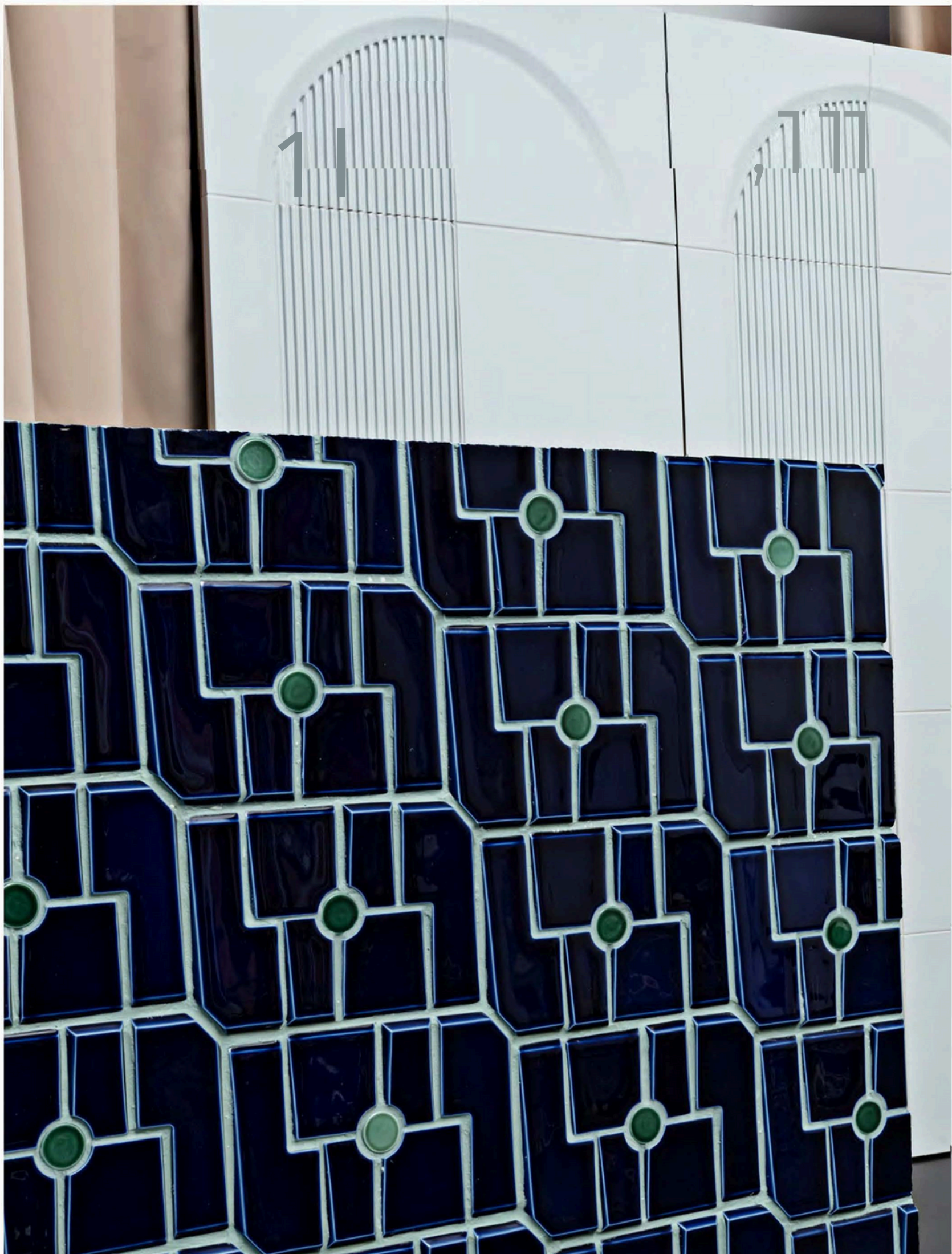
— EST 1967 —

FACINGS

OF AMERICA

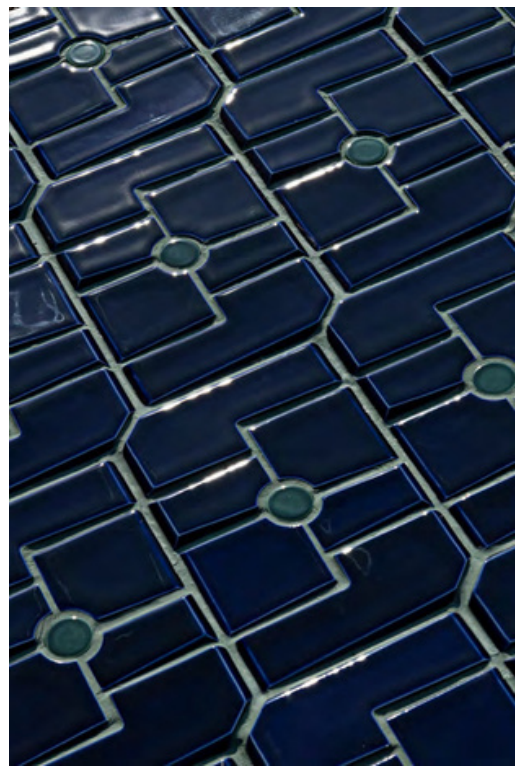




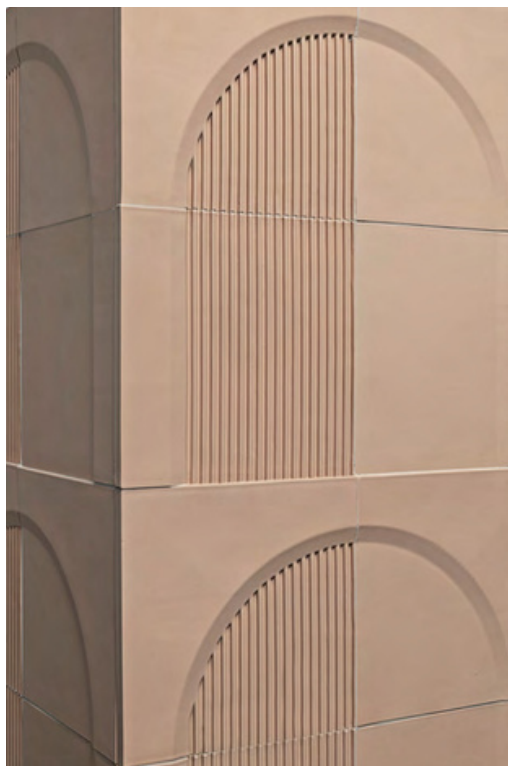


collections.

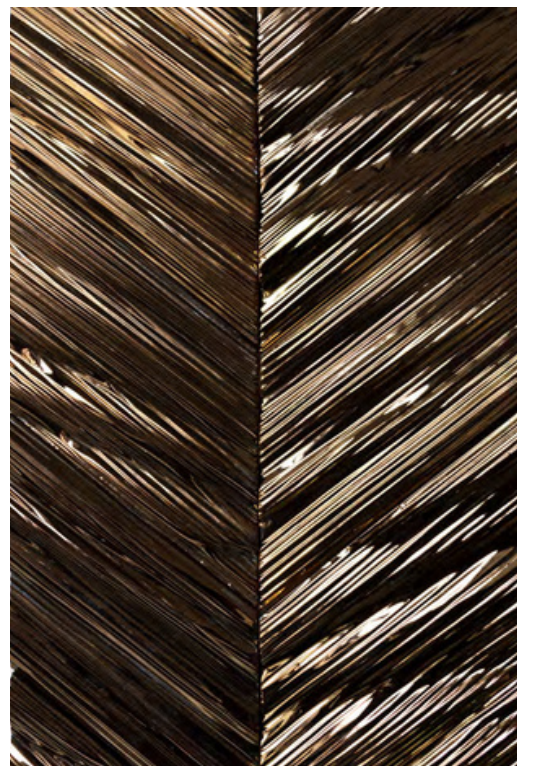
.01



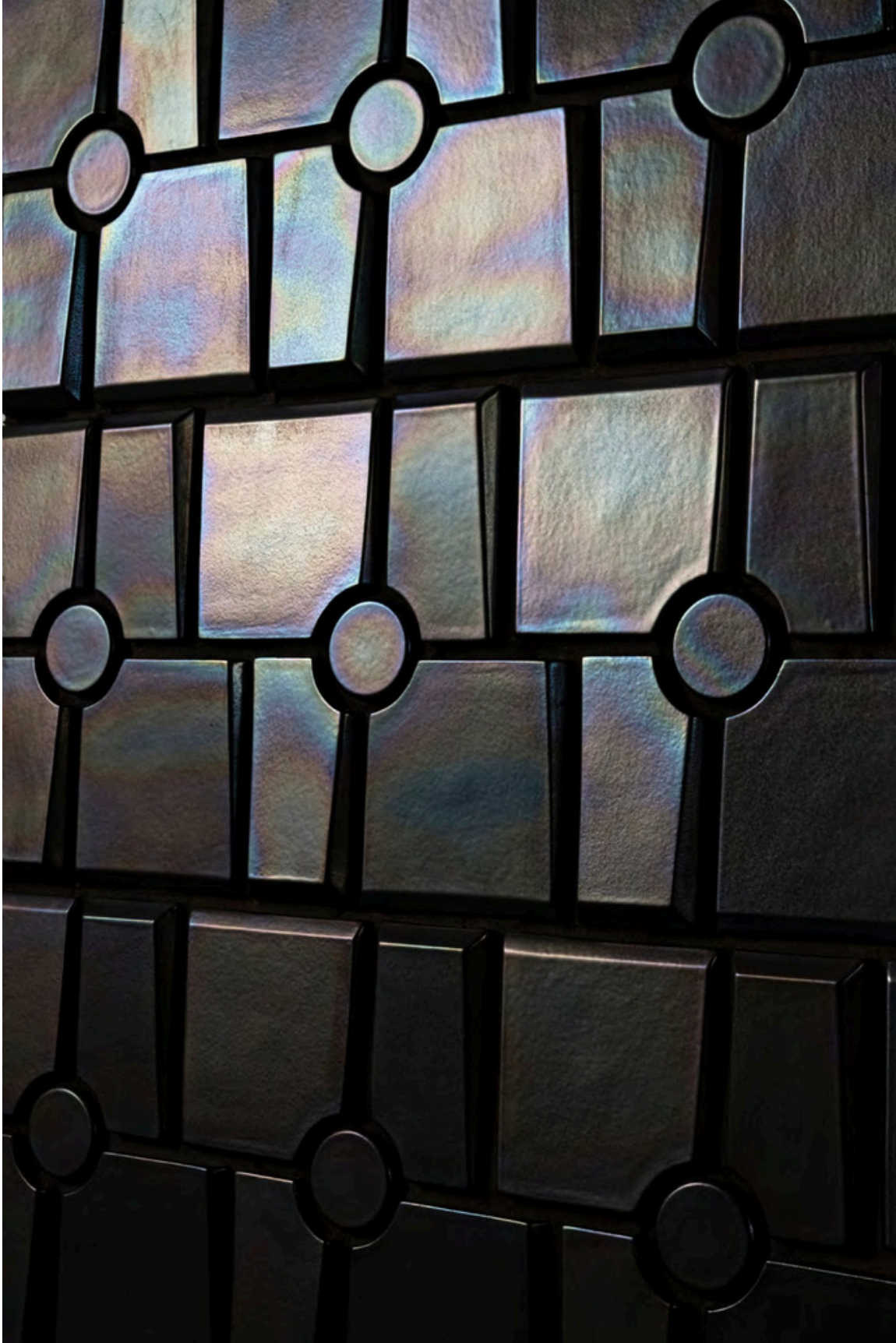
.02



.03



maya. 01



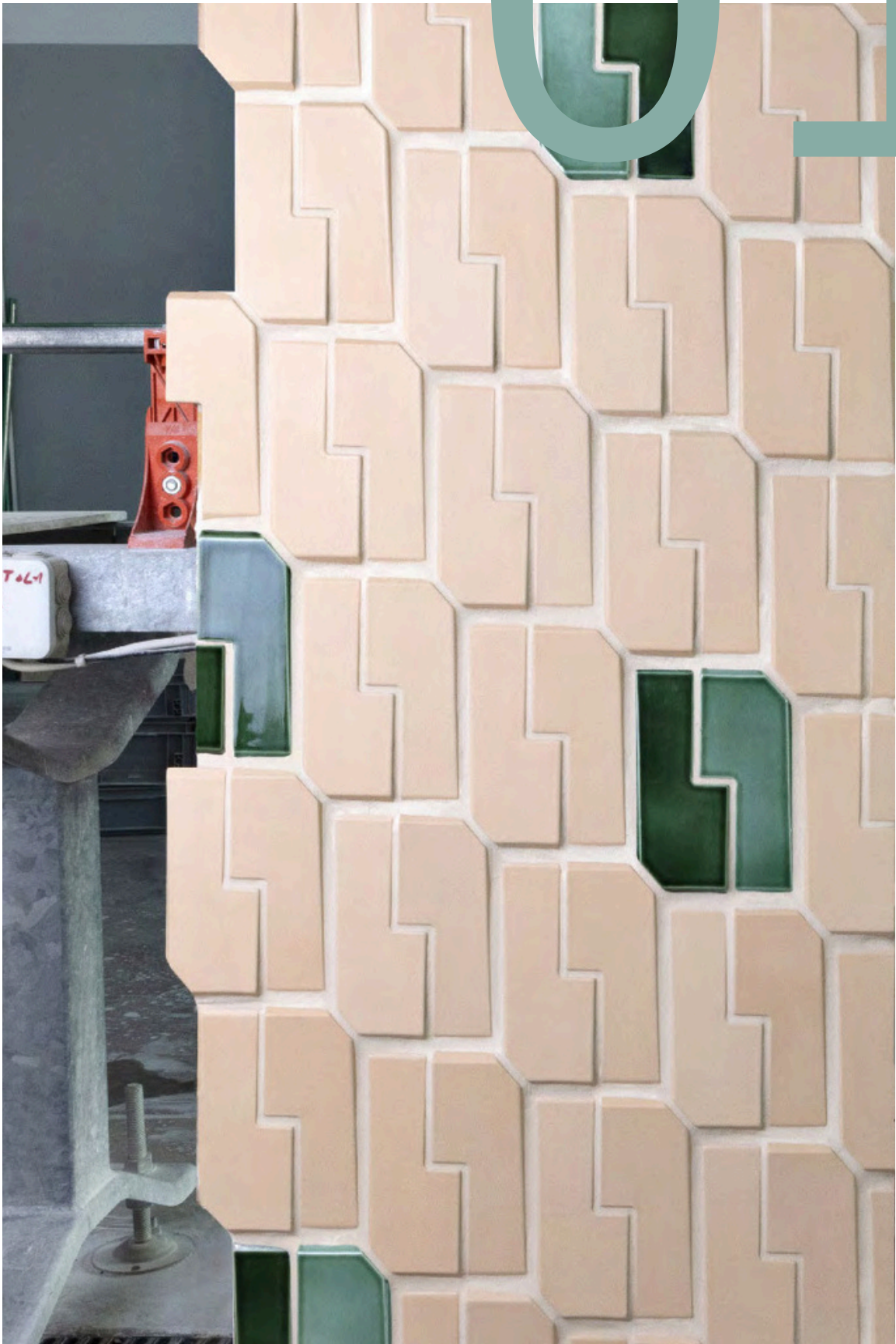
01 . MAYA COLLECTION

design Giacomo Totti

The fine porcelain surface is inspired by the architectural styles and ancestral symbols from South American civilizations, in an interplay of natural echoes between heaven and earth. The elements, although apparently very different from the other, can be laid in multiple configurations to create geometric patterns and compose labyrinths, where the spaces—either larger or smaller—play a part in the final aesthetic. Each three-dimensional element has a characteristic irregular that enhances the color shading and reflects the light in a variable manner, highlighting the richness of the collection. The colors, some of which are iridescent, match or contrast with each other and the spaces between them.

Formats: sizes vary depending on the element
Colours: glossy cobalt, emerald, matt silk, luster custom on request

01

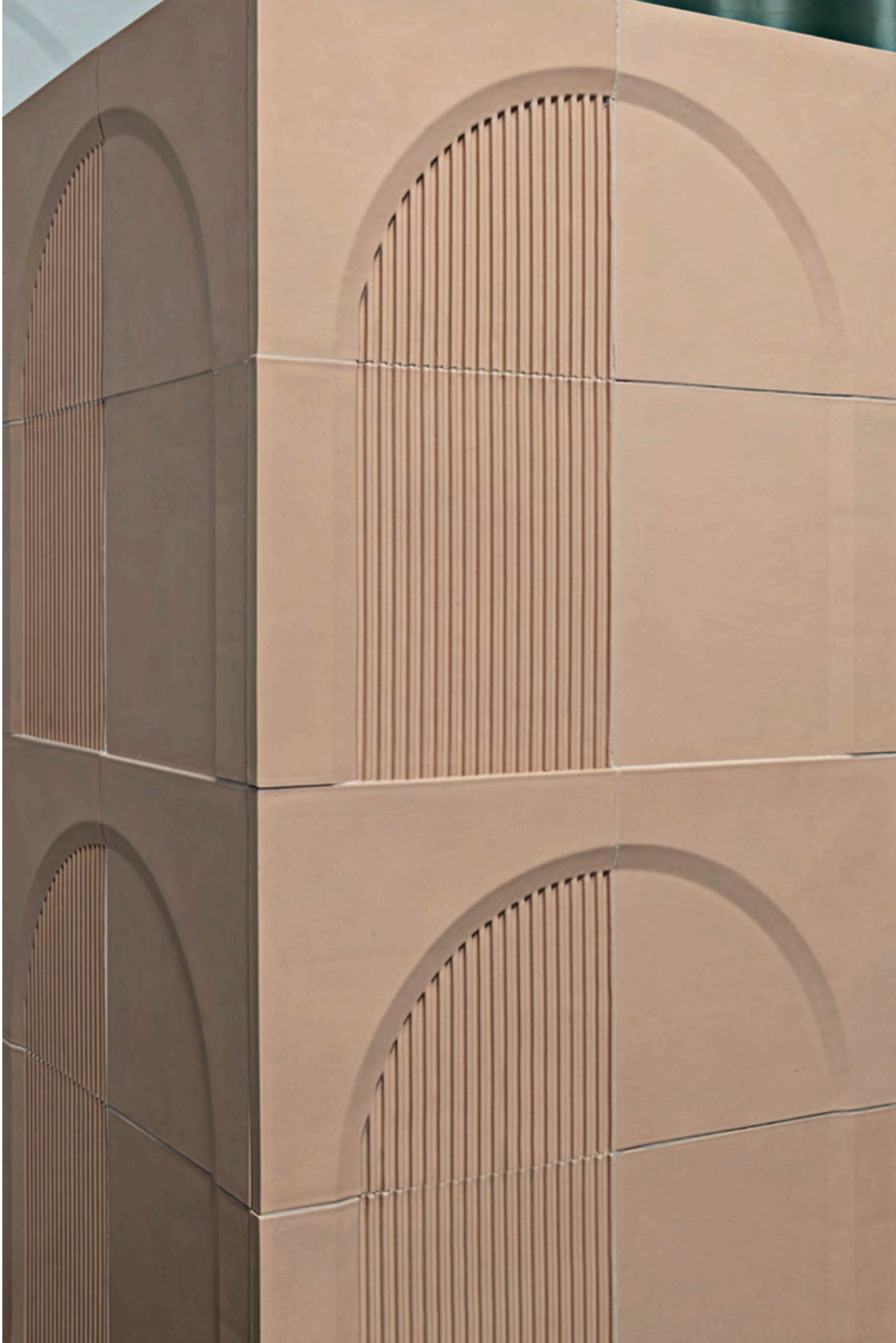








arena. 02



02 .

ARENA COLLECTION

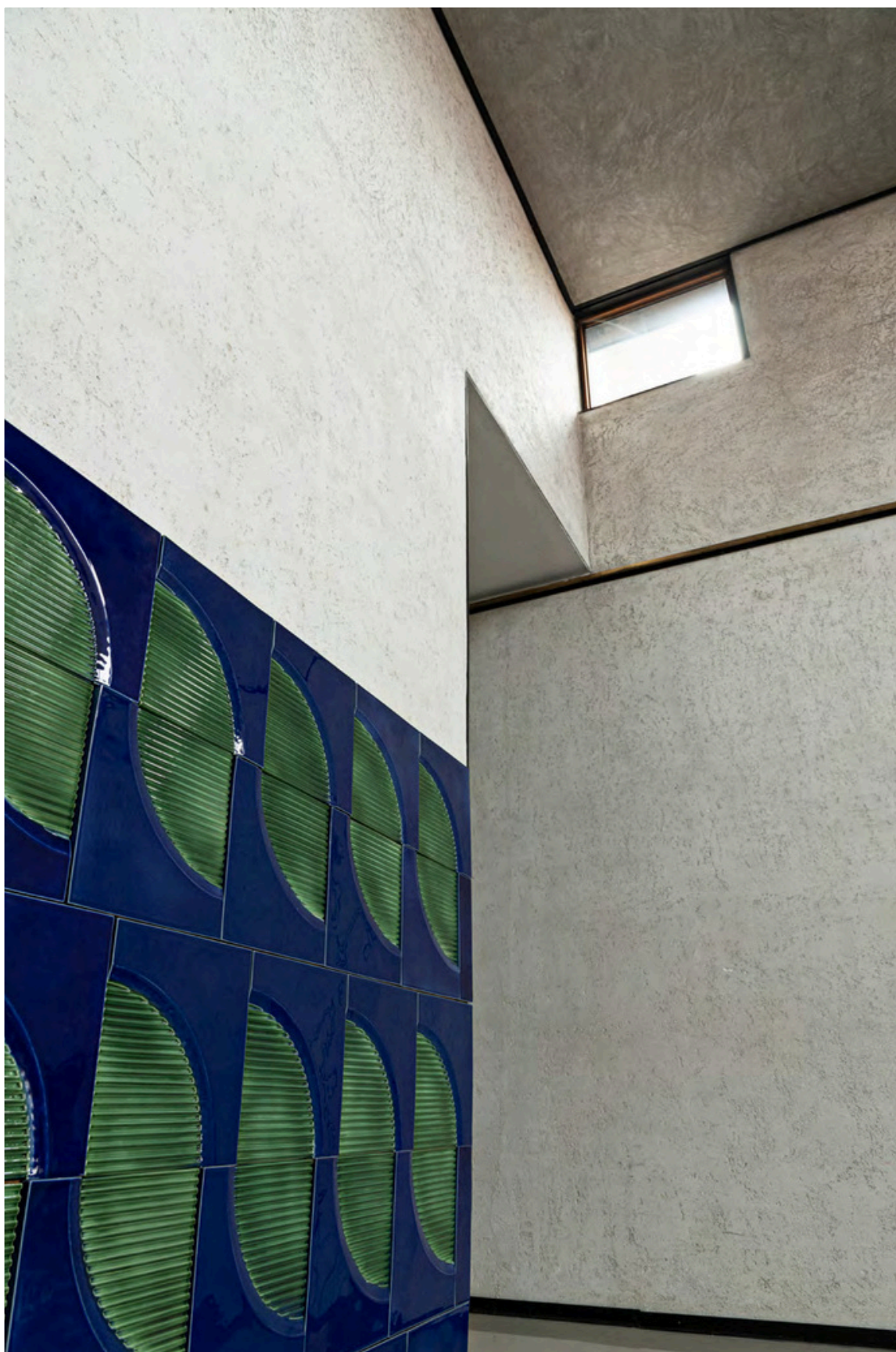
design Giacomo Totti

The artistic culture and ancient architecture of Verona are reinterpreted in refined porcelain surfaces with lines that recall classicism yet also allude to metaphysical visions. Each spare element has a raised portion that can be straight or define an arch; the other portion can be smooth or textured with grooves. The use of two different colors in the same element and the raised and textured options allow for multiple combinations.

Format: square element side 29.5 cm Colours: matt silk, matt snow, matt cobalt custom on request

02

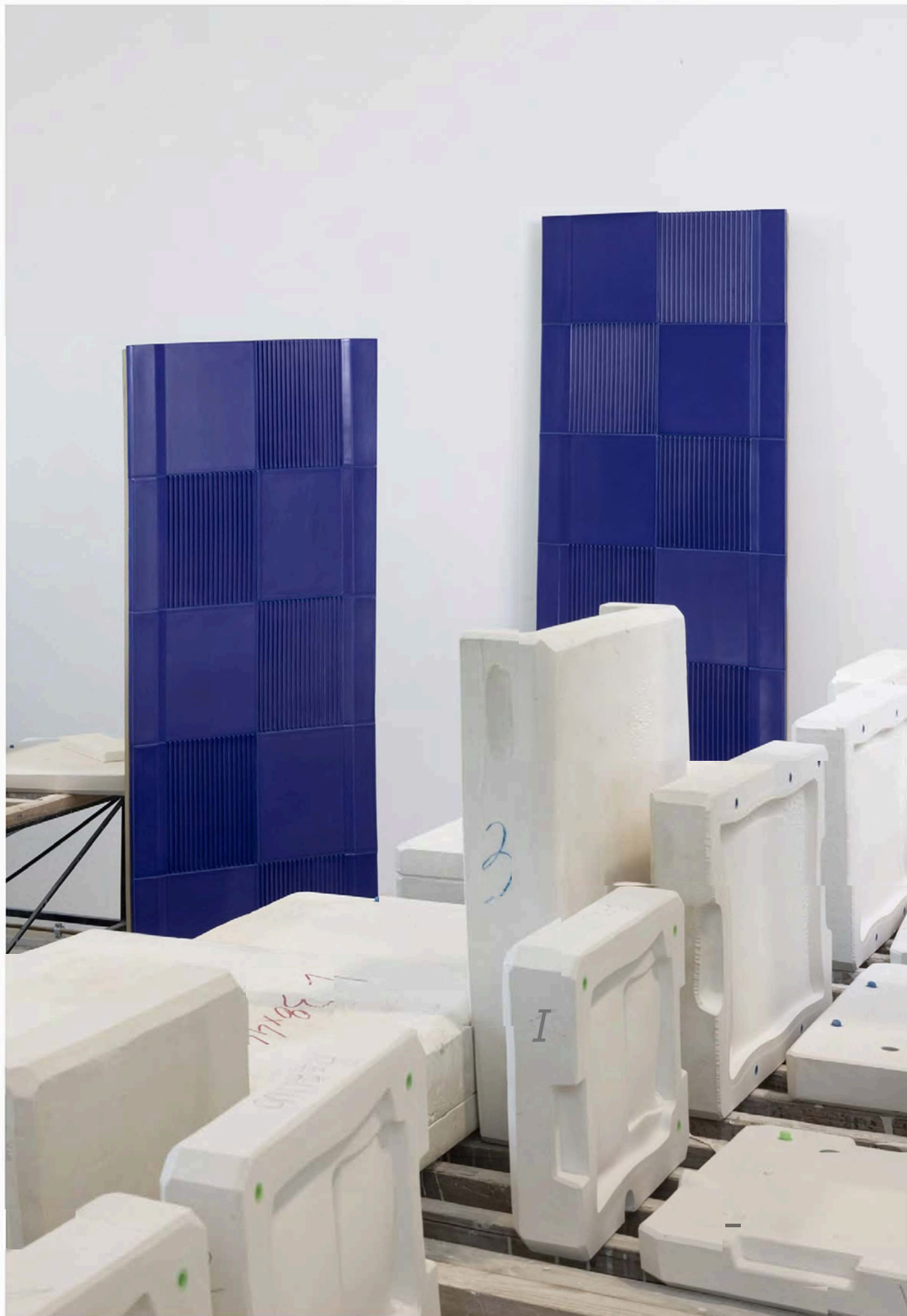


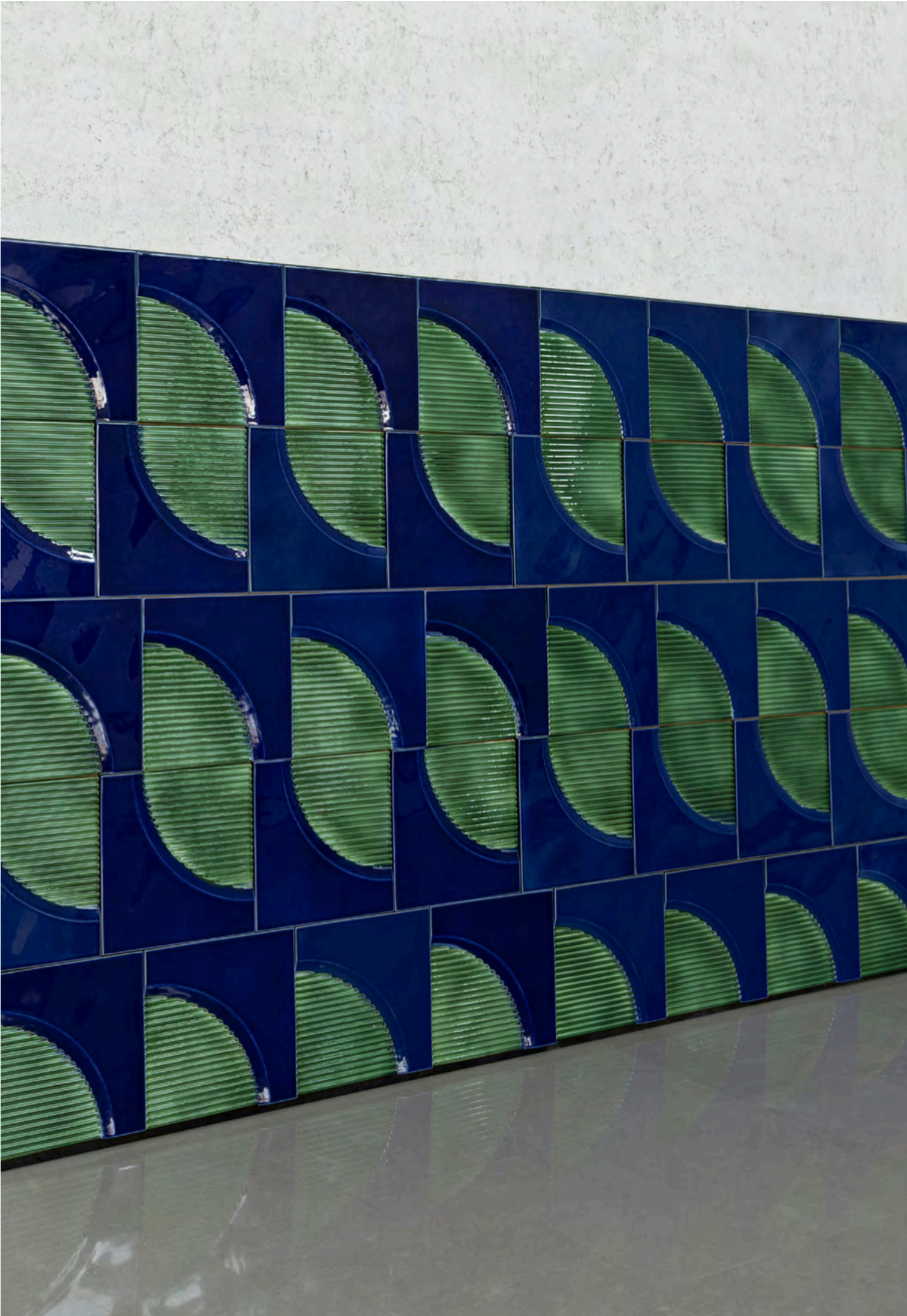














calipso. 03



03 .

CALIPSO COLLECTION

design Giacomo Totti

A homage to this mythological figure, goddess of the sea, the surface echoes the rippling of the waves in porcelain, in a juxtaposition of abstract and textural references. A feeling of movement is given by the three-dimensional texturing, which is unique for each element, and is further emphasized by a herringbone layout: this creates an alternation of light and shadow that enhances the material with its own precious language.

Format: parallelogram element long side 31.5 cm, short side 19.5 cm Colours: gold bronze, matt snow, sage custom on request

03

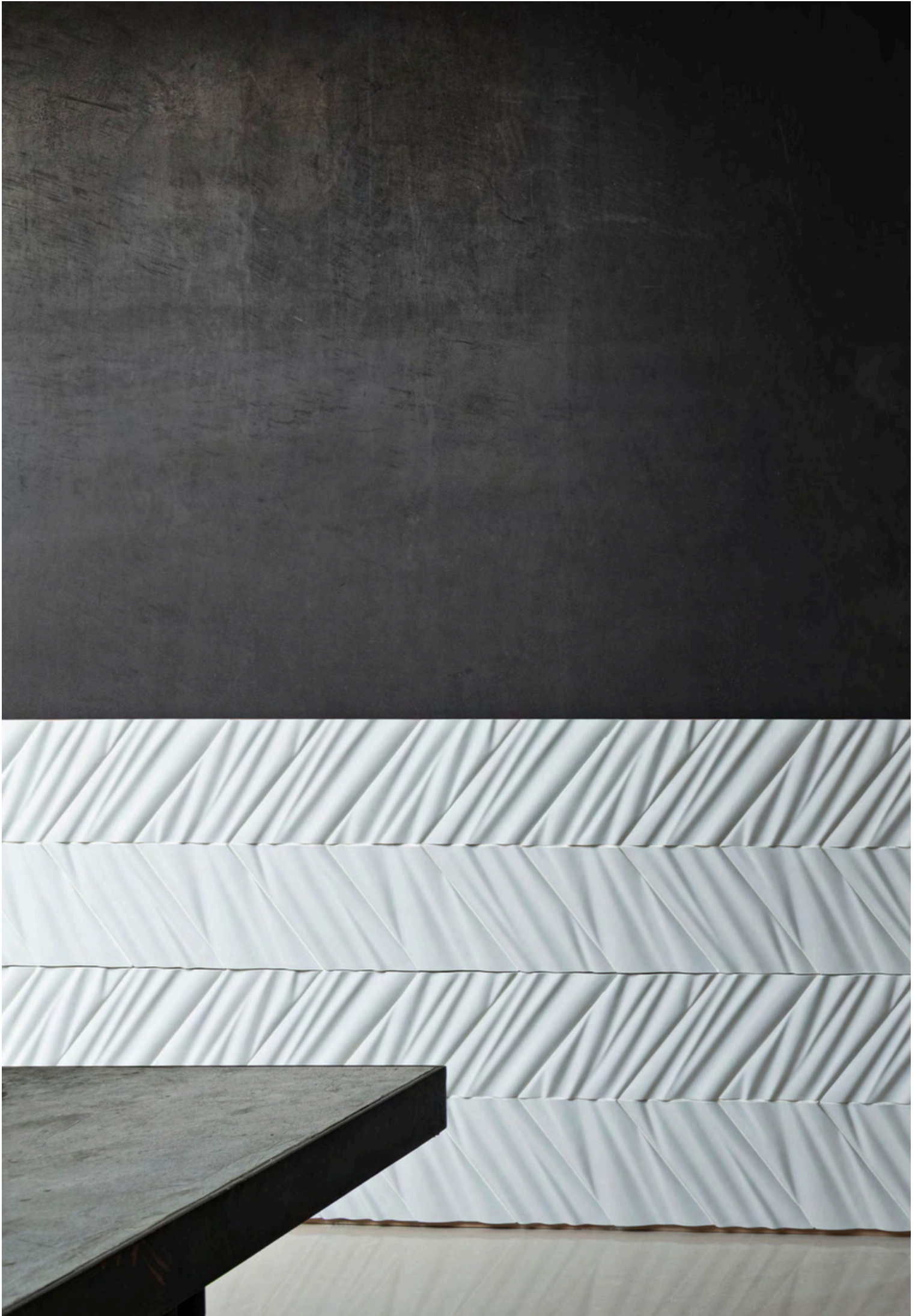




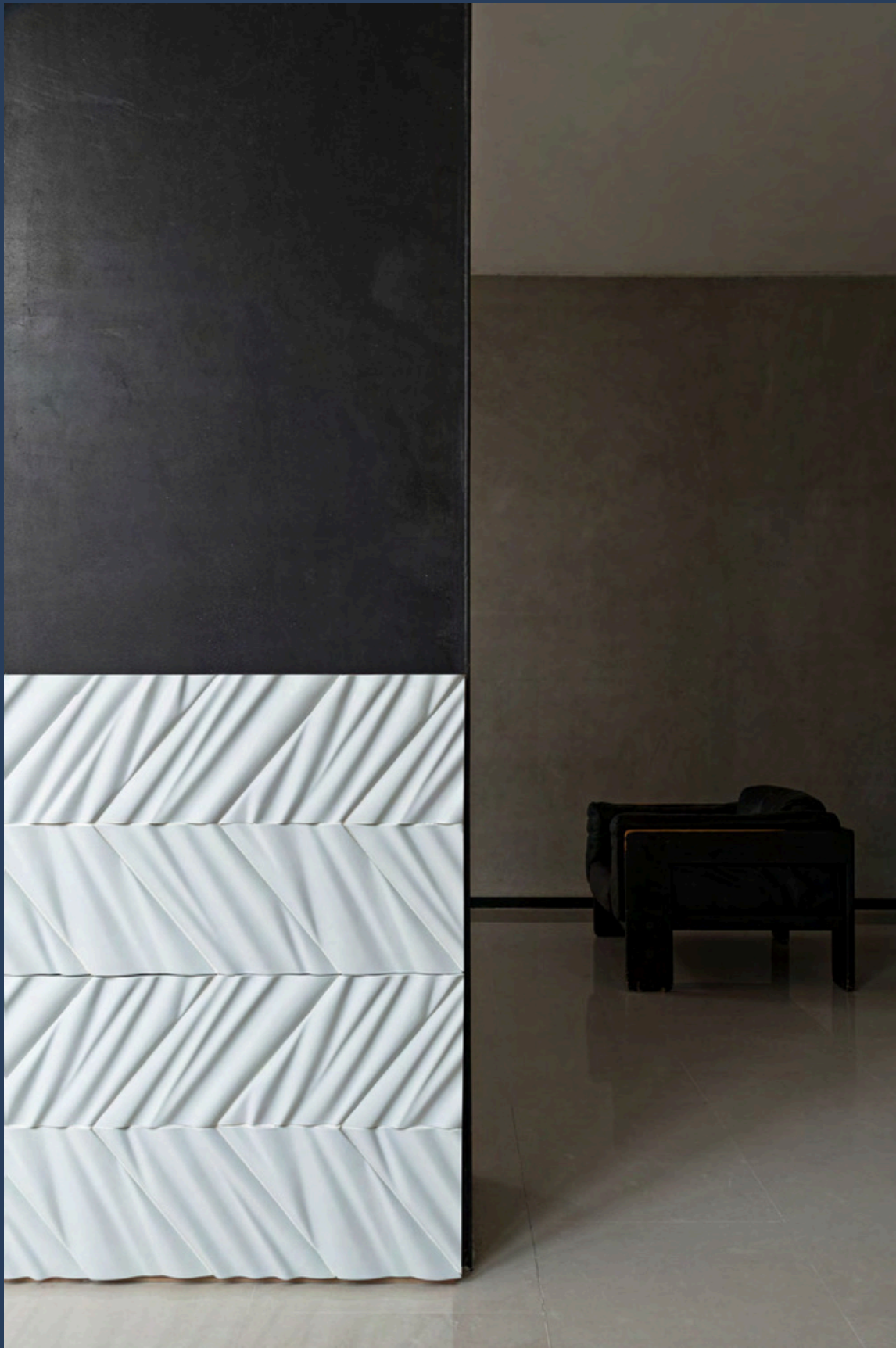






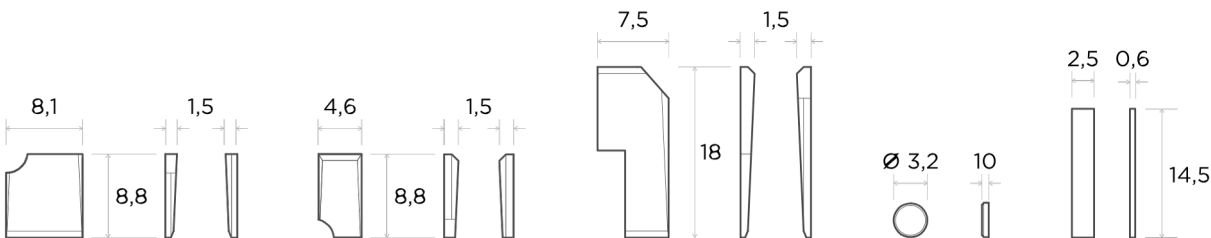




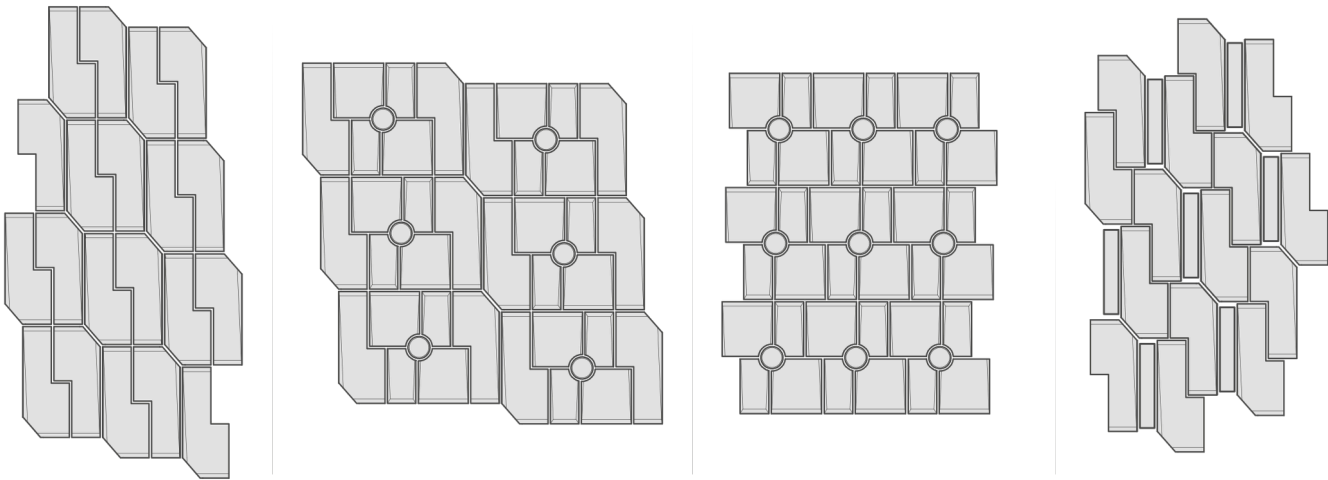


MAYA

ELEMENTS AND DIMENSIONS [CM]

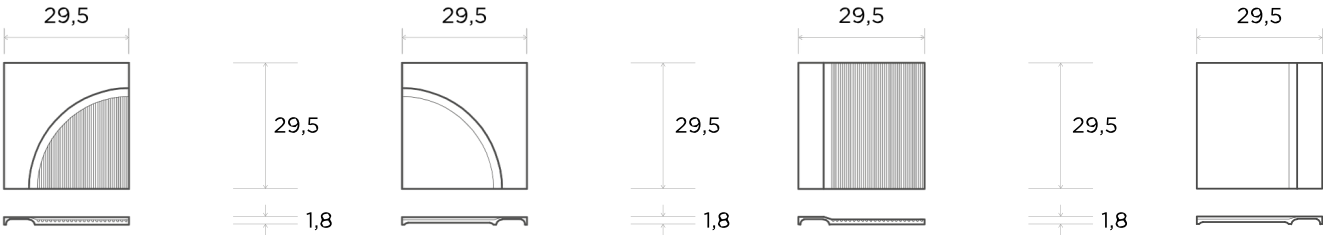


TYPES OF COMPOSITION

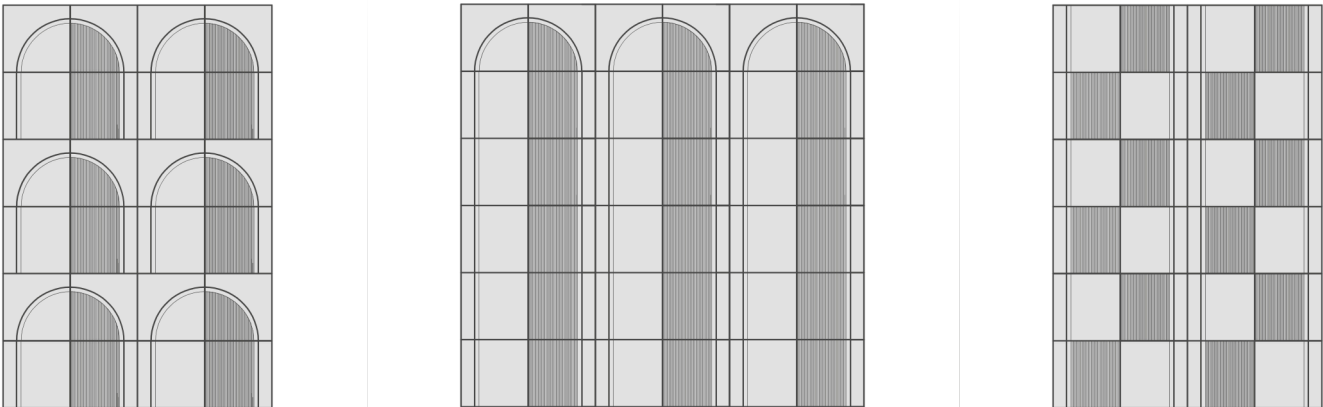


ARENA

ELEMENTS AND DIMENSIONS [CM]

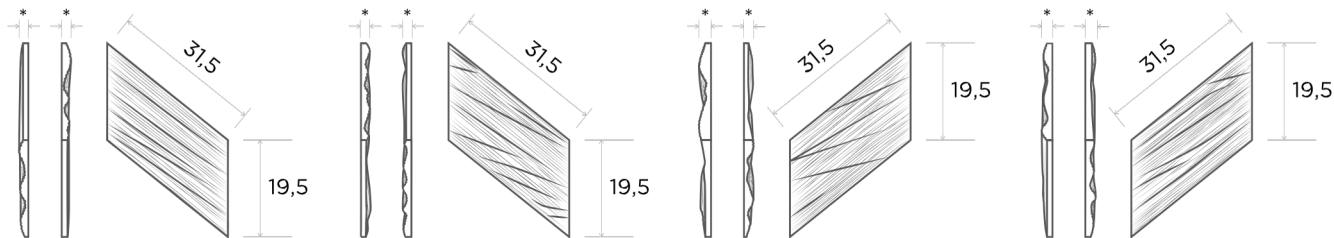


TYPES OF COMPOSITION



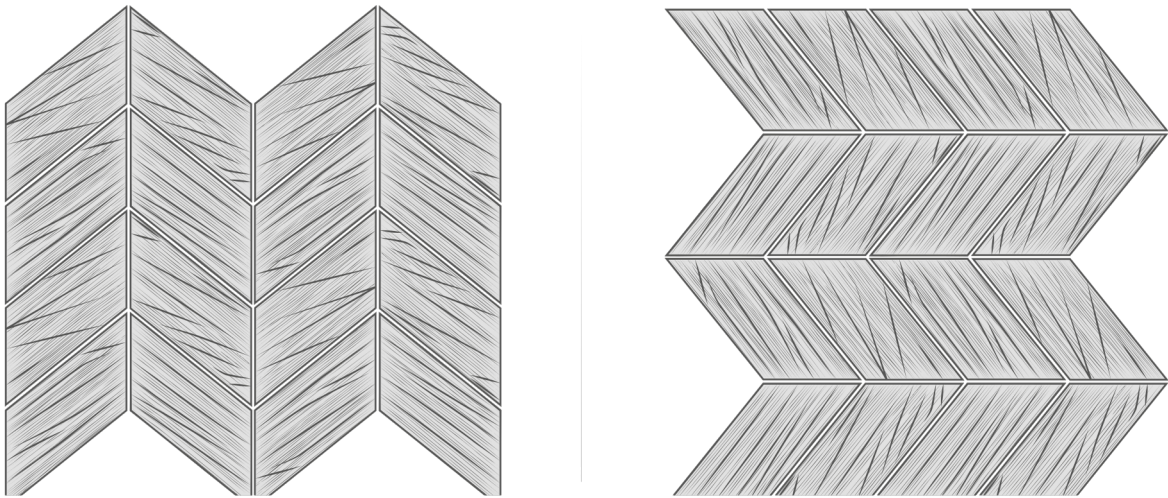
CALIPSO

ELEMENTS AND DIMENSIONS [CM]



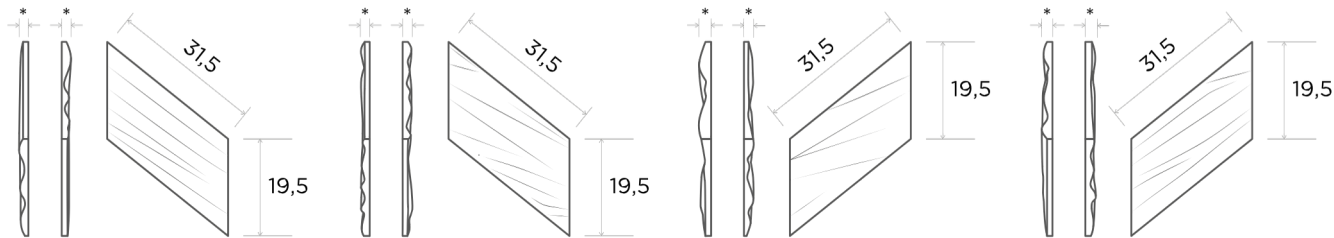
* Thickness max 2,2 cm-

TYPES OF COMPOSITION



CALIPSO SMOOTH

ELEMENTS AND DIMENSIONS [CM]



* Thickness max 2,2 cm-

TYPES OF COMPOSITION

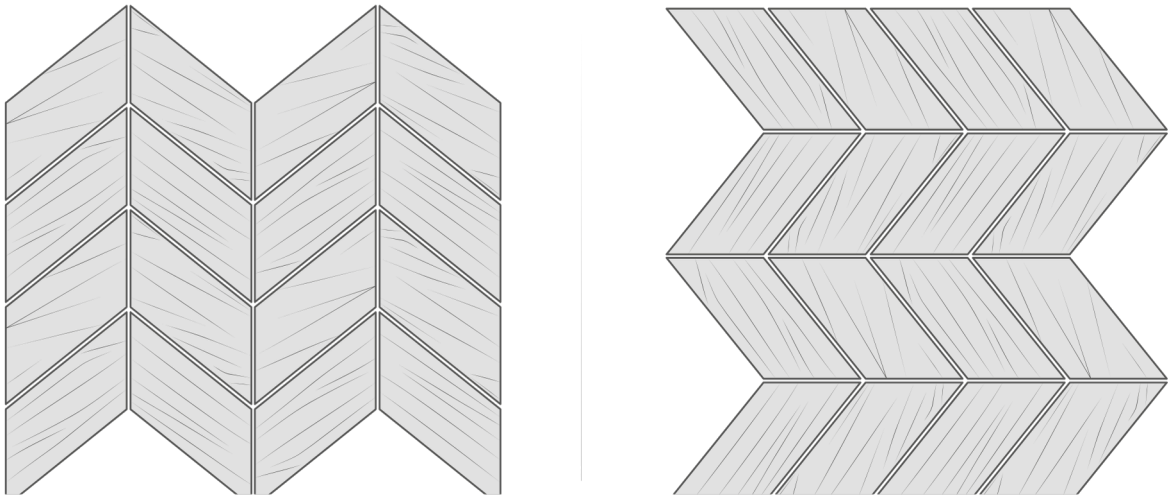


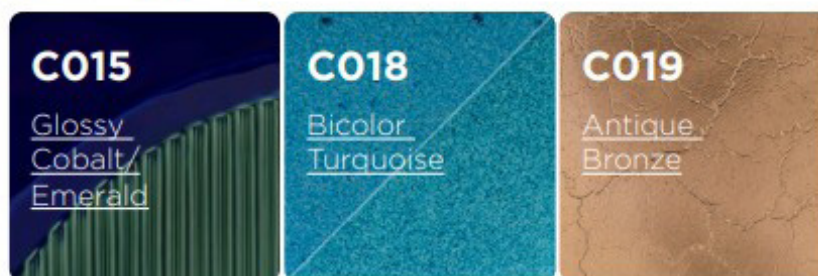
TABELLA COLORI COLORS CHART

FINITURE MONOCROMATICHE MONOCHROMATIC FINISH

C001 <u>Glossy</u> <u>Cobalt</u>	C002L <u>Emerald</u> <u>Light</u>	C002M <u>Emerald</u> <u>Medium</u>	C002D <u>Emerald</u> <u>Dark</u>
C003 <u>Matt</u> <u>Silk</u>	C004 <u>Yellow</u>	C005 <u>Red</u>	C006 <u>Tiffany</u>
C008 <u>Matt</u> <u>Snow</u>	C009 <u>Matt</u> <u>Cobalt</u>	C010 <u>Matt</u> <u>Rose</u>	C011 <u>Matt</u> <u>Noir</u>
C013 <u>Salvia</u>	C020 <u>Antique</u> <u>Metallic</u>	C021 <u>Glossy</u> <u>Aquamarine</u>	C022 <u>Matt</u> <u>Turquoise</u>
C023 <u>Glossy</u> <u>Beige</u>	C024 <u>Glossy</u> <u>Orange</u>	C025 <u>Matt</u> <u>Red</u>	C026 <u>Antique</u> <u>Red</u>
C027 <u>Glossy</u> <u>Skin</u>	C028 <u>Glossy</u> <u>Turquoise</u>		

TABELLA COLORI COLORS CHART

FINITURE SPECIALI SPECIAL FINISH



FINITURE TERZO FUOCO PETIT FEU FINISH



FINITURA PLATINUM PLATINUM FINISH



FINITURA GOLD BRONZE GOLD BRONZE FINISH



