

TERRE

— EST 1967 —

FACINGS

— OF AMERICA —

TERRE

Terre emerges from the earth as its strata do: layer by layer, texture by texture, revealing colors and nuances.

Its clay textures carry the imprint of craftsmanship, evoking tradition and memory. Its crystalline textures echo the brilliance of minerals, allowing us to combine clay and color. That is the contrast we seek in Terre, the art of combining to create inspiring environments. A collection that blends just as geological layers do.

It is available in two formats, square and rectangular, enabling compositions that can be uniform, contrasting or visually rhythmic.

For us, ceramics are the medium through which matter becomes expression.

-

Terre emerge de la tierra como lo hacen sus estratos: capa a capa, textura a textura, revelando colores y matices.

Sus texturas de barro tienen la impronta de la artesanía, recuerdan tradición y memoria. Sus texturas cristalinas simbolizan el acabado brillante de los cristales, y nos permiten combinar barro y color. Ese es el contraste que buscamos en Terre, ese arte de combinar para crear espacios que inspiren. Una colección que se mezcla como lo hacen las capas geológicas.

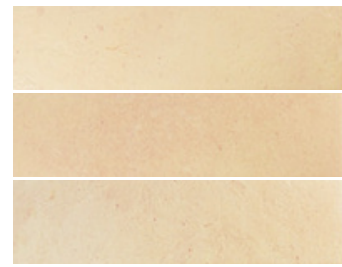
Se presenta en dos formatos, cuadrado y rectangular, que permiten componer tanto superficies uniformes, de contraste o con cierto ritmo visual.

Para nosotros la cerámica es el medio a través del cual convertimos la materia en expresión.

| | |
|---|---------|
| 01. SIZES, COLOURS AND FINISHES / FORMATOS, COLORES Y ACABADOS | pag. 4 |
| 02. GET INSPIRED / INSPIRATE | pag. 6 |
| 03. GROUTING RECOMMENDATIONS / RECOMENDACIONES PARA EL REJUNTADO | pag. 30 |
| 04. TECHNICAL FEATURES / CARACTERÍSTICAS TÉCNICAS | pag. 32 |
| 05. PACKING | pag. 33 |
| 06. PRICE CODE / CÓDIGO DE TARIFA | pag. 33 |
| 07. TECHNICAL DRAWINGS / DIBUJOS TÉCNICOS | pag. 34 |
| 08. RECOMMENDATIONS / RECOMENDACIONES | pag. 35 |



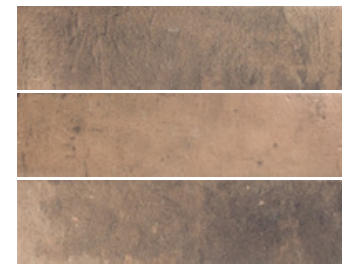
TERRE 7x28 cm / 2.5"x11"



Wheat



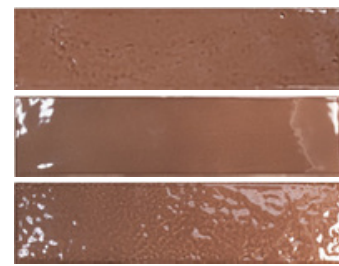
Sienna



Umber



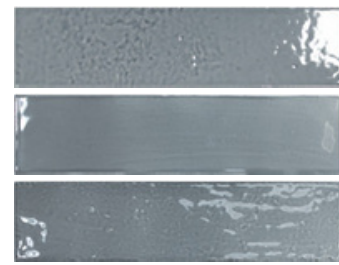
White Gloss



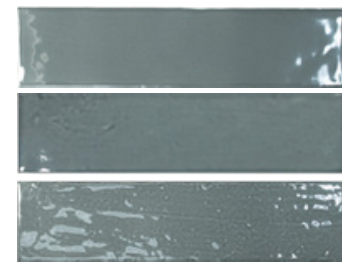
Chestnut Gloss



Turquoise Gloss

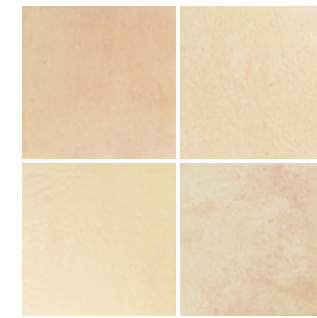


Pale Blue Gloss

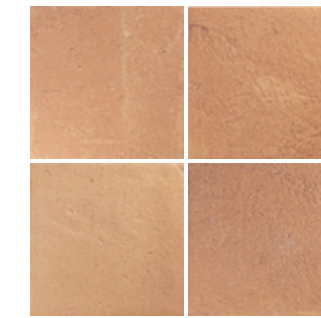


Smoke Gloss

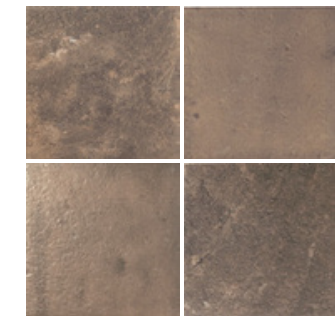
TERRE SQUARE 11,6x11,6 cm / 4.6"x4.6"



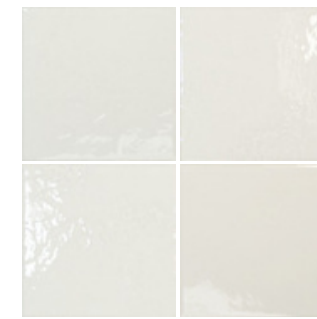
Wheat



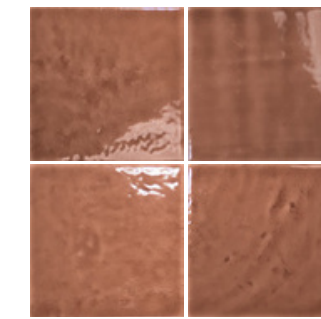
Sienna



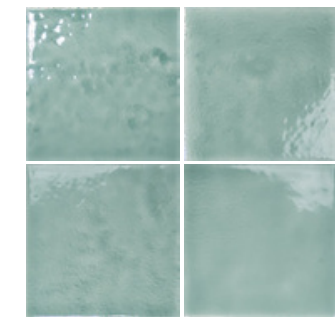
Umber



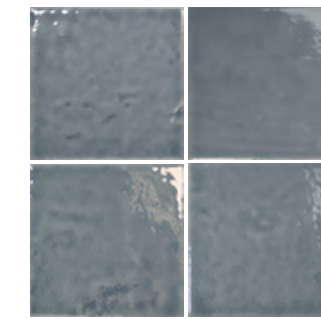
White Gloss



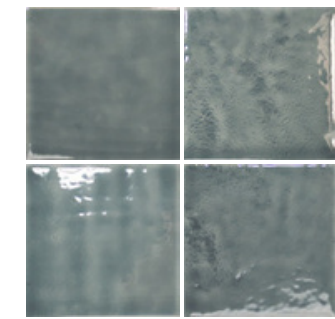
Chestnut Gloss



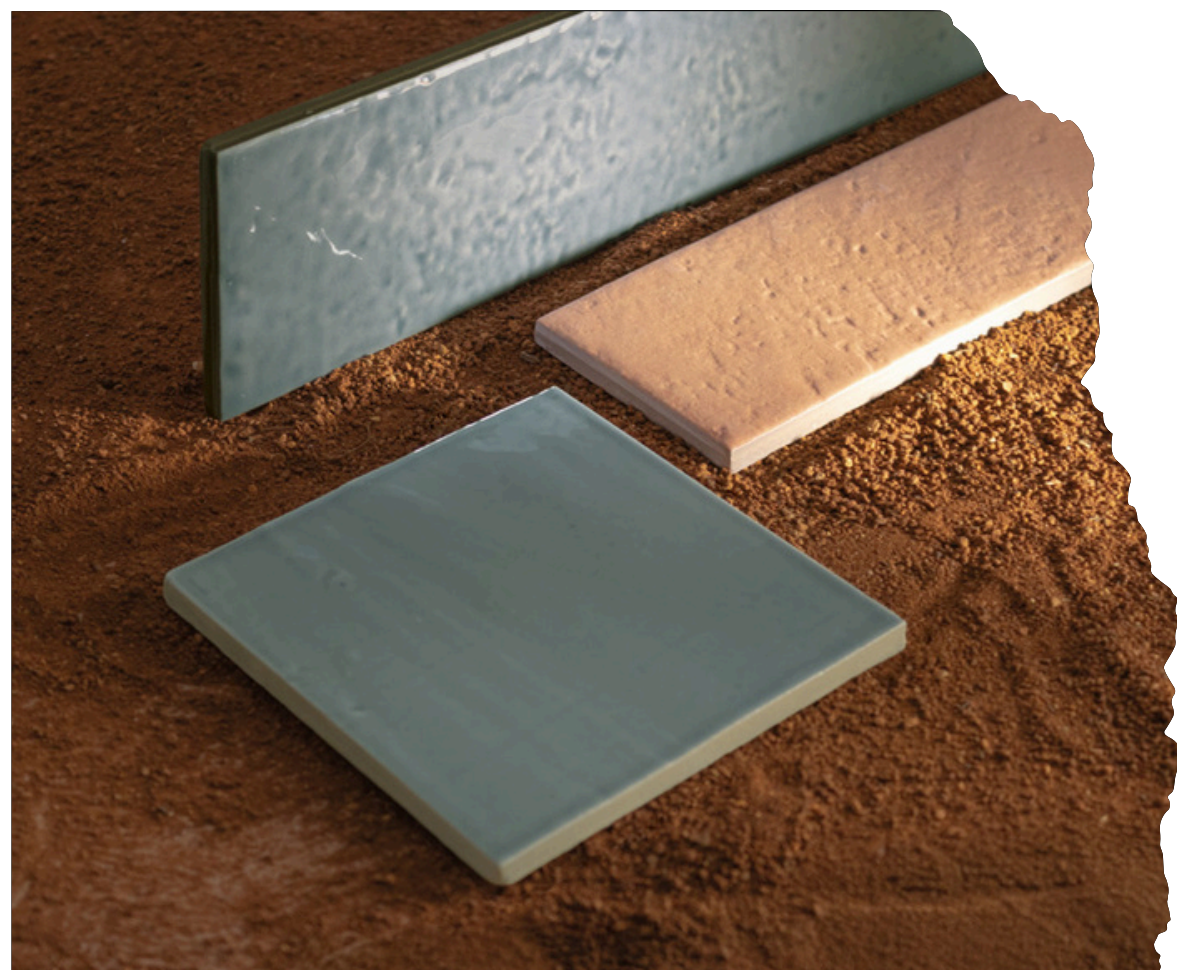
Turquoise Gloss



Pale Blue Gloss



Smoke Gloss



Floor: *Terre Square* **Smoke Gloss**, *Terre Sienna* 70% & **Smoke Gloss** 30% (Random composition)

Wall: *Terre* **Smoke Gloss**





Terre Sienna 95% & *Turquoise Gloss* 5%

Bar: *Terre Square Sienna* 50%, *Tuquoise Gloss* 25% & *Smoke Gloss* 25%

Floor: *Terre Sienna*

Shelves: *Terre Smoke Gloss*





▲ Terre Square **Sienna 77% & White Gloss 23%**

Terre Square **Sienna** ▶

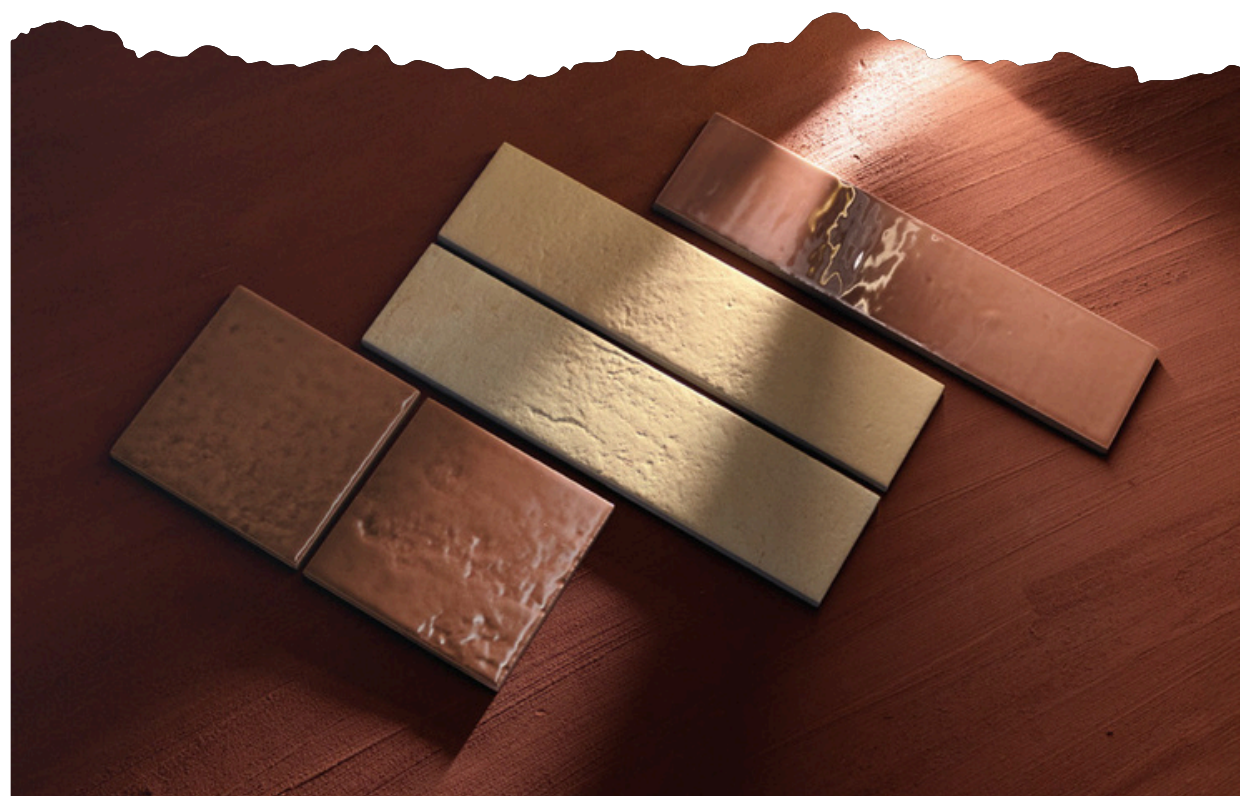
Wall: Faces Coast Bone (Faces Collection)





Terre **White Gloss**

Floor & Side Wall: Terre **Square Wheat**



Wall: *Terre Wheat, Chestnut Gloss & White Gloss, Terre Square Chestnut Gloss & Wheat*
Floor: *Terre Square Wheat, Terre Wheat, Chestnut Gloss & White Gloss*

(Random composition)





Terre Square **Wheat, Sienna & White Gloss**

Bar & Extractor Hood: Terre **Sienna**
Wall: Terre Square **Sienna 10% & White Gloss 90% (Random composition)**



Bar: **Terre Sienna 90% & Turquoise Gloss 10%**
Floor: **Terre Sienna 95% & Turquoise Gloss 5%**
(Random composition)

Wall: Reef Sand (Reef Collection)

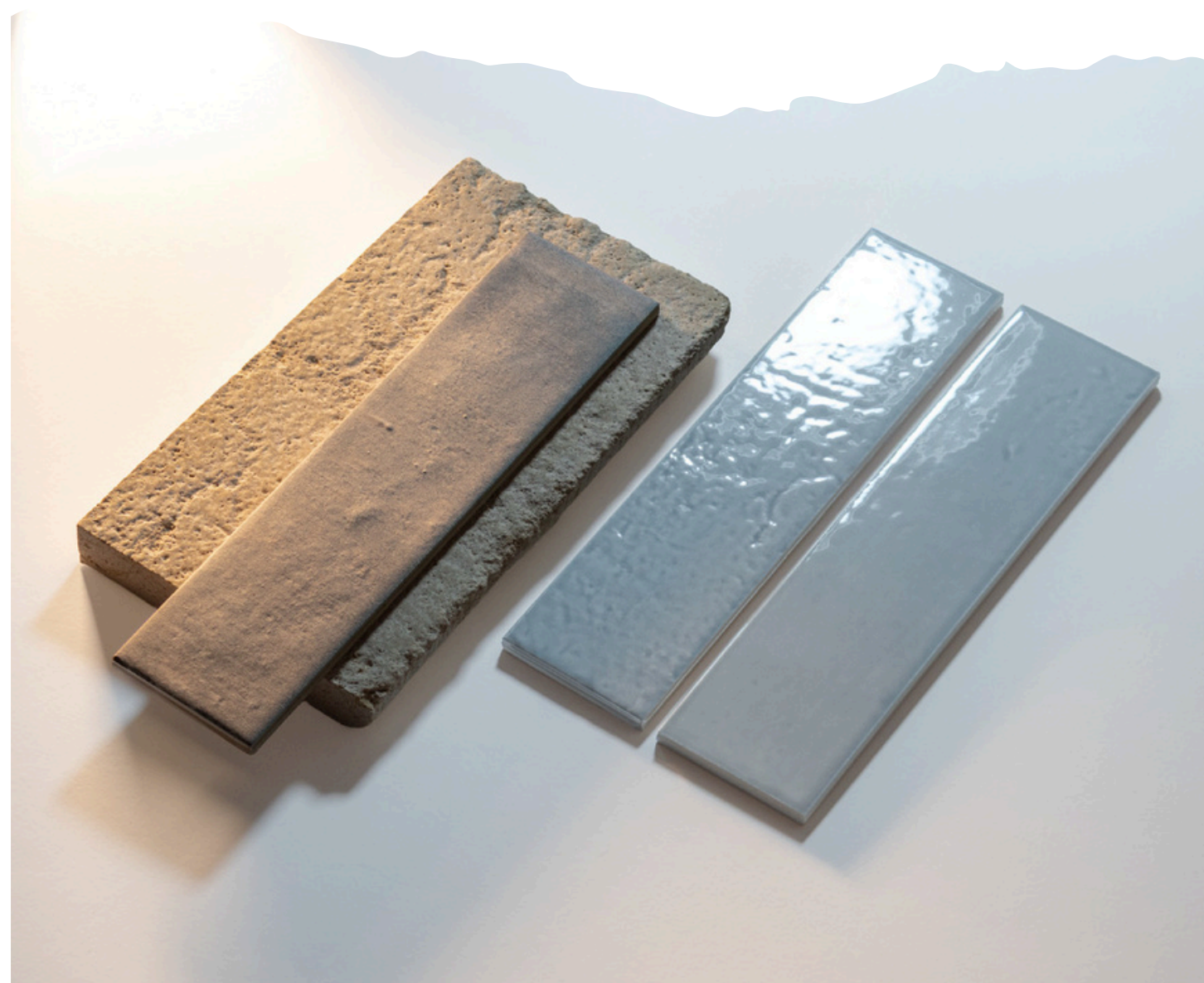


◀ **Terre Wheat**

Table: **Terre Square Pale Blue Gloss**
Floor: **Terre Square Wheat**

Terre Square Sienna ▶

Bench: **Terre Square Turquoise Gloss**
Wall: Reef Sand (Reef Collection)



Bar: *Terre Umber & Smoke Gloss*

Floor: *Terre Umber 83% & Smoke Gloss 17%*

Planter & Tables: *Terre Smoke Gloss*



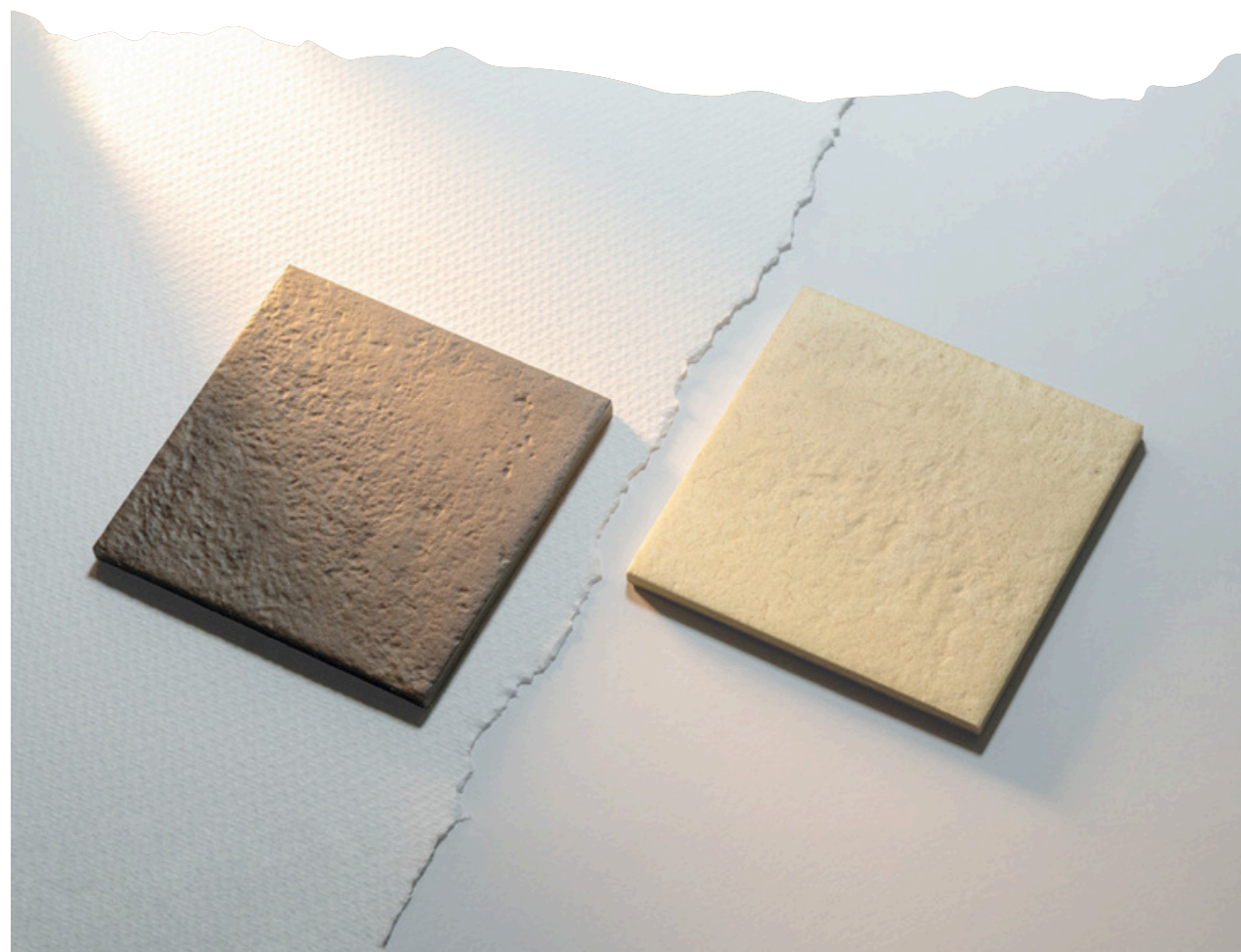


◀ Planter: *Terre Square Umber 83% & White Gloss 17%*

Floor: *Terre Square Wheat 40% & Umber 60%* ▲

Floor: *Terre Square Umber 90% & White Gloss 10%*
(Random composition)

Wall: *Terre Square Wheat 2% & Umber 98%*
(Random composition)



Wall: *Terre Square Umber* | Pattern: **Umber 50% & Wheat 50%**

Floor: *Terre Square Wheat* | Pattern: **Umber 50% & Wheat 50%**







Wall: Terre Square **Sienna 75% & Umber 25%**

Floor: Terre Square **Sienna 50% & Umber 50%**


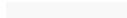


TERRE
Wheat

Grout Colour: **Fugabella 25** 
Laticrete 61 



TERRE
White Gloss

Grout Colour: **Fugabella 03** 
Laticrete 44 




TERRE
Turquoise Gloss

Grout Colour: **Fugabella 07** 
Laticrete 78 





TERRE
Chestnut Gloss

Grout Colour: **Fugabella 40** 
Laticrete 58 





TERRE
Sienna

Grout Colour: **Fugabella 32** 
Laticrete 92 



TERRE
Umber

Grout Colour: **Fugabella 45** 
Laticrete 57 




TERRE
Pale Blue Gloss

Grout Colour: **Fugabella 14** 
Laticrete 91 



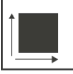

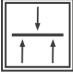









TERRE
Smoke Gloss

Grout Colour: **Fugabella 08** 
Laticrete 60 







* The colors shown are for guidance only, and ceramic shades may vary between production batches. References are approximate and do not exactly match the final color. We recommend requesting physical samples. The suggested grout colors are aesthetic recommendations and may be adjusted according to customer preference. The company is not responsible for any differences between printed or digital colors and the final product.

* Los colores mostrados son orientativos, y la tonalidad de la cerámica puede variar entre lotes de producción. Las referencias son aproximadas y no equivalen con exactitud al color real, recomendamos solicitar muestras físicas. Los colores de junta indicados son sugerencias estéticas y quedan sujetos al criterio del consumidor. La empresa no se responsabiliza por diferencias entre los colores impresos o digitales y el producto final.

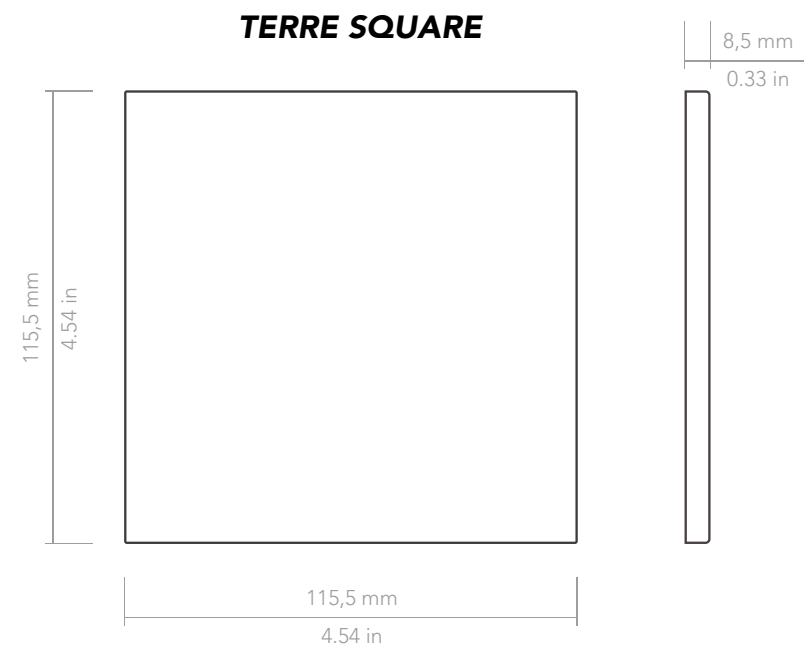
Porcelain tiles with water absorption $B_{la} \leq 0,5\%$ for interior and exterior floors and walls.
Baldosas cerámicas prensadas en seco con absorción de agua $B_{la} \leq 0,5\%$ para suelos y paredes interiores y exteriores.

| FEATURES / CARACTERÍSTICAS | SPECIFICATION / ESPECIFICACIÓN | NORMA |
|---|--|---------------------------------------|
|  Dimensional Features | Terre: 69 mm +/- 0,9 mm x 278,8 mm +/- 1,6 mm x 8,5 mm +/- 0,5 mm Terre Square: 115,5 mm +/- 0,9 mm x 115,5 mm +/- 0,9 mm x 8,5 mm +/- 0,5 mm | UNE-EN ISO 10545-2:2019 |
|  Water absorption | $E_b \leq 0,5\%$ | UNE-EN ISO 10545-3:2018 |
|  Modulus of rupture | Minimum 35 N/mm ² >1300 N | UNE-EN ISO 10545-4:2019 |
|  Abrasive resistance | PEI 5: White Gloss PEI 4: Wheat, Sienna PEI 3: Umber, Turquoise Gloss & Pale Blue Gloss PEI 2: Smoke Gloss & Chestnut Gloss | UNE-EN ISO 10545-7:1999 |
|  Crazing resistance | Pass | UNE-EN ISO 10545-11:1997 |
|  Frost resistance | Pass | UNE-EN ISO 10545-11:1997 |
|  Household products resistance | GA | UNE-EN ISO 10545-13:2017 |
|  Chemical resistance | GHA | UNE-EN ISO 10545-13:2017 |
|  Stain resistance | 5 | UNE-EN ISO 10545-14:2015 |
|  Non-slip value | R10 CLASS 2 DCOF >0,42 Except GLOSS | UNE-EN 16165:2022 ANSI A137.1:2012 |
|  Tone variation | V1: White Gloss V3: Turquoise Gloss, Chestnut Gloss, Pale Blue Gloss & Smoke Gloss V5: Wheat, Sienna & Umber | - |
|  Porcelain body | - | - |

| |  |  | KG  | M2  |  | M2  |
|--------------|---|---|--|--|---|--|
| Modelo | Formato (cm) | Piezas / Caja | Kg / Caja | m2 / Caja | Cajas / Palet | m2 / Palet |
| TERRE | 7x28 cm | 28 | 9,98 kg | 0,549 m ² | 96 | 52,70 m ² |
| TERRE SQUARE | 11,6x11,6 cm | 38 | 9,47 kg | 0,507 m ² | 102 | 51,714 m ² |

| |  |  | LB  | FT2  |  | FT2  |
|--------------|---|---|--|---|---|---|
| Model | Format (in) | Pieces / Box | Lb/ box | sq ft / Box | Boxes / Pallet | sq ft / Pallet |
| TERRE | 2.5"x11" | 28 | 22.002 lb | 5.909 ft ² | 96 | 567.257 ft ² |
| TERRE SQUARE | 4.6"x4.6" | 38 | 20.877 lb | 5.457 ft ² | 102 | 556.644 ft ² |

| MODEL / MODELO | PRICE CODE / CODIGO TARIFA |
|----------------|----------------------------|
| TERRE | W12 |
| TERRE SQUARE | W16 |



WAREHOUSING

In order to guarantee the characteristics of the finish the product must be kept in its original packaging until the time of fixing. If the product is likely to be stored for a long period of time it should be suitably covered.

TILE FIXING

To ensure the products adhere correctly to the surface, it is essential to use specific adhesive and grouting material. This must also be suitable for the environment they will have to withstand. Fitting with traditional mortars does not ensure good adhesion.

Due to the nature of the material there may be dimensional variations between pieces. Therefore, all types of joints must be planned and carried out correctly: structural, perimeter, expansion and installation joints. Fitting tiles without joints

is not advisable from any technical point of view as this may lead to various problems. For an optimal result we advise to use 2 mm (0.08") grout.

GROUTING

The choice of quality grouting mortar is crucial.

We recommend:

- Kerakoll Fugabella® Color (www.kerakoll.com)
- Litokol StyleGrout (www.litokol.it)
- Laticrete Permacolor Select (www.laticrete.com)

MAINTENANCE AND CLEANING

Once the materials have been fitted, it is advisable to remove any remaining adhesive and grouting material by using a commercial descaling product designed especially, diluted with water. The descaling product must not remain in contact with the surface to be cleaned for more than 5 minutes.

As a general guideline, powder detergents should not be used, not wire wool or abrasive materials. Generally a sponge will be sufficient with warm water and liquid neutral soap. Then rinse with plenty of clean water.

ALMACENAMIENTO

Para garantizar las características de su acabado, el producto debe mantenerse en su embalaje original hasta el momento de la colocación. Si el producto va a permanecer almacenado durante un largo periodo es conveniente hacerlo bajo cubierta.

COLOCACIÓN

Para garantizar una buena adhesión al soporte es necesaria la utilización de materiales de agarre y de rejuntado adecuados al ambiente al que vayan a estar sometidos. La colocación con morteros tradicionales no garantiza una buena adhesión.

Debido a la naturaleza del material pueden existir diferencias dimensionales entre piezas. Por ello deberán planificarse y ejecutarse correctamente todo tipo de juntas: estructurales, perimetrales, de dilatación y de colocación. La colocación

sin juntas es desaconsejable desde cualquier punto de vista técnico, pudiendo ser el origen de diversas patologías. Para un resultado óptimo recomendamos usar 2 mm de junta.

REJUNTADO

Es importante la elección de un material de rejunte de calidad. WOW recomienda utilizar:

- Kerakoll Fugabella® Color (www.kerakoll.com)
- Litokol StyleGrout (www.litokol.it)
- Laticrete Permacolor Select (www.laticrete.com)

MANTENIMIENTO Y LIMPIEZA

Finalizada la puesta en obra se recomienda eliminar los restos de materiales de agarre y rejuntado con un desincrustante comercial diseñado expresamente para baldosas cerámicas, rebajado con agua, permaneciendo en contacto con la superficie a limpiar no más de 5 minutos. Como norma general no deben utilizarse detergentes en polvo ni estropajos metálicos o abrasivos. Generalmente será suficiente con una esponja, agua tibia y un jabón líquido neutro. Posteriormente aclarar con abundante agua limpia.

— EST 1967 —

FACINGS

—

OF AMERICA

