



LEATHER NATURAL 7"X59"

COLORS



TRUE NATURAL 7"X59"



BIRCH NATURAL 7"X59"



SHADE NATURAL 7"X59"

Grove is an Italian-made rectified porcelain inspired by the timeless elegance of oak.
 Fine details in both texture and color bring warmth and life to any application.
 Versatility and durability make it suitable for both residential and commercial settings.

ADDITIONAL SIZES

- 3"X24" (TRUE, LEATHER, & SHADE ONLY)
- 6"X36" RT
- 6"X36" R11 FINISH RT
- 12"X95" RT (TRUE, LEATHER, & SHADE ONLY)

SPECIALTY

- 3"X36" SURFACE BULLNOSE
- 3"X12" NOTCHED STAIR RISER TRIM
- 13"X59" STAIR TREAD WITH PROFILE
- 13"X13" LEFT STAIR CORNER WITH PROFILE
- 13"X13" RIGHT STAIR CORNER WITH PROFILE
- 16"X32" TEXTURED WALL TILE (SHADE ONLY)
- 9"X36" RIBBED MOSAIC
- 14"X16" HERRINGBONE MOSAIC

APPLICATIONS

- INTERIOR WALLS & FLOORS
- EXTERIOR WALLS & FLOORS
- STEAM SHOWERS

GROVE

NUMBER OF FACES: 32

COLOR BODY RECTIFIED PORCELAIN (7"X59")

FLOOR TILES		CLASSIFICATION IN ACCORDANCE WITH EN 14411 ANNEXE G B la UGL	
PHYSICAL-CHEMICAL PROPERTIES	STANDARD OF TEST	REQUIREMENTS	AVERAGE RATING
THICKNESS	ISO 10545-02	3/8" ± 5%	CONFORMS
WATER ABSORPTION	ISO 10545-03	≤ .5%	CONFORMS
CHEMICAL RESISTANCE	ISO 10545-13	CLASS UB MIN (UGL)	ULA
BREAK RESISTANCE	ISO 10545-04	S ≥ 1300 N	CONFORMS
		R ≥ 35N/MM ²	
DEEP SCRATCH RESISTANCE	ISO 10545-06	≤ 175 MM ³	≤ 150 MM ³
THERMAL SHOCK RESISTANCE	ISO 10545-09	PASS ACCORDING TO EN ISO 10545-1	CONFORMS
FROST RESISTANCE	ISO 10545-12	PASS ACCORDING TO EN ISO 10545-1	CONFORMS
STAIN RESISTANCE	ISO 10545-14	CLASS 3 MIN	CLASS 5
SLIP RESISTANCE	DIN 51130	CLASSIFICATION R	R10
DYNAMIC COEFFICIENT OF FRICTION	ANSI A137.1:2012	≥ .42 WET	CONFORMS

GROVE

WHITE BODY RECTIFIED PORCELAIN WALL TILE

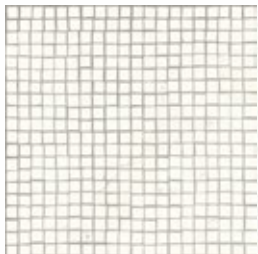
WALL TILES		CLASSIFICATION IN ACCORDANCE WITH GRUPPO B III GL	
PHYSICAL-CHEMICAL PROPERTIES	STANDARD OF TEST	REQUIREMENTS	AVERAGE RATING
THICKNESS	ISO 10545-02	3/8" ± 10%	CONFORMS
WATER ABSORPTION	ISO 10545-03	EV > 10%	CONFORMS
CHEMICAL RESISTANCE	ISO 10545-13	CLASS UB MIN (UGL)	ULA
BREAK RESISTANCE	ISO 10545-04	S ≥ 1300 N	CONFORMS
		R ≥ 35N/MM ²	
CRAZING RESISTANCE	ISO 10545-11	TEST METHOD AVAILABLE	CONFORMS
STAIN RESISTANCE	ISO 10545-14	CLASS 3 MIN	CONFORMS

PLEASE VIEW ACTUAL MATERIAL BEFORE MAKING YOUR SELECTION, AS PRINTED IMAGES ARE ONLY REPRESENTATIVE.
 SHADE VARIATION IS TO BE EXPECTED.

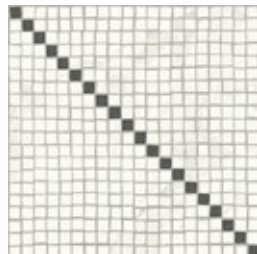


PORTO AVA (WALL), OBI, TAVIRA BORDER & TAVIRA ANGLE (FLOOR)

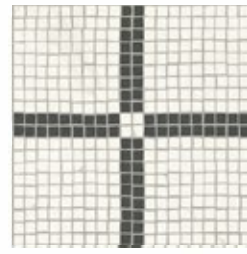
COLORS



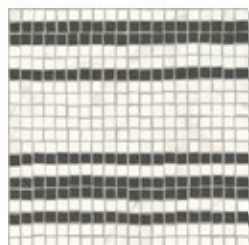
OBI 6"X6"



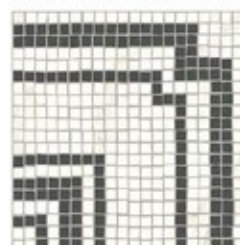
AVA 6"X6"



EVO 6"X6"



TAVIRA BORDER 6"X6"



TAVIRA CORNER 6"X6"

Introducing Porto, a Spanish-made glazed tile inspired by traditional mosaic pavement frequently applied in pedestrian areas of Portugal. Porto's classic black and white palette and geometric patterns create an elegant backdrop in any setting. Versatility and durability make it suitable for a variety of residential and commercial applications.

APPLICATIONS
 INTERIOR WALLS & FLOORS
 EXTERIOR WALLS & FLOORS
 WATERLINES & STEAM SHOWERS

PORTO

GLAZED PORCELAIN TILE

FLOOR TILES	CLASSIFICATION IN ACCORDANCE WITH EN 14411-GROUP BIa		
PHYSICAL-CHEMICAL PROPERTIES	STANDARD OF TEST	VALUE	
THICKNESS	UNE-EN 14411	1/4" THICKNESS	MEETS ALL REQUIREMENTS
WATER ABSORPTION	ISO 10545-03		≤ .5%
BREAKING STRENGTH	ISO 10545-04		2615 N
ABRASION RESISTANCE	ISO 10545-07		4
THERMAL SHOCK RESISTANCE	ISO 10545-09		COMPLIES
CRACKING RESISTANCE	ISO 10545-11		COMPLIES
FROST RESISTANCE	ISO 10545-12		COMPLIES
CHEMICAL RESISTANCE	ISO 10545-13		COMPLIES
RESISTANCE TO ACIDS	ISO 10545-13		GHA, GLA
RESISTANCE TO ALCALIS	ISO 10545-13		GHA, GLA
STAIN RESISTANCE	ISO 10545-14		5
SLIP RESISTANCE (Rd)	ENV12633		CLASS 2
SLIP RESISTANCE ®	DIN 51130		R10

PLEASE VIEW ACTUAL MATERIAL BEFORE MAKING YOUR SELECTION, AS PRINTED IMAGES ARE ONLY REPRESENTATIVE. SHADE VARIATION IS TO BE EXPECTED.





GREENWICH NATURAL 3"X11"

COLORS



CHELSEA NATURAL 3"X11"



GREENWICH NATURAL 3"X11"



SOHO NATURAL 3"X11"

DOWNTOWN



Downtown brings a modern twist to an old world brick style design with a concaved structure, and preserves a rustic element with shade variation to give the effect of a natural patina.

SPECIALTY

3"X11" NATURAL SURFACE BULLNOSE
3"X8.4"X3" NATURAL BASE CORNER

APPLICATIONS

INTERIOR WALLS & FLOORS
EXTERIOR WALLS
STEAM SHOWERS
POOLS & SPAS

DOWNTOWN
PORCELAIN STONEWARE
NUMBER OF FACES: 36
ACTUAL DIMENSIONS: 2.76"X11.02"

FLOOR TILES		CLASSIFICATION IN ACCORDANCE WITH EN 14411 ANNEXE G B la UGL	
PHYSICAL-CHEMICAL PROPERTIES	STANDARD OF TEST	VALUE	
LENGTH AND WIDTH	ISO 10545-02	± 0.1	
THICKNESS DEVIATION	ISO 10545-02	1/4"	± 5 mm
STRAIGHTNESS OF SIDES	ISO 10545-02	± 0.15 %	
ORTOGONALITY	ISO 10545-02	± 0.15 %	
FLATNESS	ISO 10545-02	± 0.2 %	
SURFACE QUALITY	ISO 10545-02	95%	
WATER ABSORPTION	ISO 10545-03	< 0.5 %	
BREAKING STRENGTH	ISO 10545-04	> 1300 N	
FLEXURAL STRENGTH	ISO 10545-04	> 35	
IMPACT RESISTANCE	ISO 10545-05	0.81 - 0.85	
RESISTANCE TO ABRASION	ISO 10545-07	CHELSEA	4
	ISO 10545-07	SOHO	3
	ISO 10545-07	GREENWICH	2
DURABILITY: FREEZE-THAW CYCLE	ISO 10545-12	PASSED	
SCRATCH RESISTANCE	EN-101	6	
SLIP RESISTANCE	UNE - ENV 12633:2003	PENDULUM	1
	DIN 51130	ANGLE OF SLIP	
	DIN 51097	BAREFOOT	
DYNAMIC COEFFICIENT OF FRICTION	ANSI A137.1-12	WET .37	
RESISTANCE TO STAINING	ISO 10545-14	VALUE	
RESISTANCE TO CHEMICALS	ISO 10545-13	PASSED	
RESISTANCE TO HIGH CONCENTRATE ACIDS/BASES	ISO 10545-13	MINIMUM GHA	
RESISTANCE TO LOW CONCENTRATE ACIDS/BASES	ISO 10545-13	MINIMUM GLA	

PLEASE VIEW ACTUAL MATERIAL BEFORE MAKING YOUR SELECTION, AS PRINTED IMAGES ARE ONLY REPRESENTATIVE. SHADE VARIATION IS TO BE EXPECTED.

— EST 1967 —
FACINGS
—
OF AMERICA



WHITE 2"X10"

COLORS



WHITE 2"X10"



GREY 2"X10"

Loft brings the dramatic look of an urban loft apartment to residential and commercial spaces. Its versatility and durability makes it suitable for interior and exterior walls and floors.

SPECIALTY
 6"X10"X2-1/3" CORNER
 2-1/3"X10" GOOD MORNING MIX, WHITE
 2-1/3"X10" FIRMA WHITE
 2-1/3"X10" IMAGE WHITE SET

APPLICATIONS
 INTERIOR WALLS & FLOORS
 EXTERIOR WALLS & FLOORS

LOFT
 GLAZED PORCELAIN STONEWARE
 ACTUAL DIMENSIONS: 2.36"X9.84"

FLOOR TILES	CLASSIFICATION IN ACCORDANCE WITH EN 14411 ANNEXE G B la UGL			
PHYSICAL-CHEMICAL PROPERTIES	STANDARD OF TEST	REQUIRED	VALUE	
THICKNESS	UNI EN ISO 10545-2	$\pm 5\% \pm .5MM$	3/8"	CONFORMS
CHEMICAL STRENGTH	UNI EN ISO 10545-13	RESISTANCE TO HIGH & LOW CONCENTRATIONS OF ALKALIS & ACIDS	GLA	GHA GA
WATER ABSORPTION	UNI EN ISO 10545-3	$\leq .5\%$	0.30%	
BENDING STRENGTH	UNI EN ISO 10545-4	$N \geq 27N/MM^2$	46N/MM2	
FROST RESISTANCE	UNI EN ISO 10545-12	NO SAMPLE MUST SHOW ALTERATIONS TO THE SURFACE	FROST PROOF	
STAIN RESISTANCE	UNI EN ISO 10545-14	CLASS ≥ 3	CLASS 5	
HARDNESS IN MOHS DEGREES	UNI EN 101	≥ 5 DEGREES MOHS	6	
SLIP RESISTANCE	DIN 51130	SATISFACTORY FRICTION	R11	
	ASTM-C 1028		DRY .81, WET .74	
	BS 7976-2		DRY 55, WET 48	
ABRASION REISITANCE	INTERNAL CLASSIFICATION SYSTEM	GLAZED TILES-ABRASION CLASS I TO V	CLASS IV, CLASS III (BLACK)	

PLEASE VIEW ACTUAL MATERIAL BEFORE MAKING YOUR SELECTION, AS PRINTED IMAGES ARE ONLY REPRESENTATIVE. SHADE VARIATION IS TO BE EXPECTED.



COLORS



WHITE 16"X24"

Introducing Industry, an Italian-made porcelain tile available exclusively at Facings of America. Industry brings the dramatic look of an urban loft apartment to residential and commercial spaces. It's versatility and durability makes it suitable for interior and exterior walls and interior floors.

ADDITIONAL SIZES

4"X12"

12"X12", 1-1/2"X1-1/2" MOSAIC

APPLICATIONS

INTERIOR WALLS & FLOORS

EXTERIOR WALLS

TRIM

3-1/2"X24" BULLNOSE

INDUSTRY

PORCELAIN STONEWARE

FLOOR TILES	CLASSIFICATION IN ACCORDANCE WITH EN 14411 ANNEXE G B la UGL	
PHYSICAL-CHEMICAL PROPERTIES	STANDARD OF TEST	VALUE
FLATNESS	ISO 10545-02	CONFORMS TO STANDARD
LENGTH AND WIDTH	ISO 10545-02	CONFORMS TO STANDARD
THICKNESS	ISO 10545-02	CONFORMS TO STANDARD
FROST RESISTANCE	ISO 10545-12	RESISTANT
THERMAL SHOCK RESISTANCE	ISO 10545-09	RESISTANT
WATER ABSORPTION	ISO 10545-03	CONFORMS TO STANDARD
CHEMICAL RESISTANCE	ISO 10545-13	CONFORMS TO STANDARD
BENDING STRENGTH	ISO 10545-04	> 38 N/mm ²
ABRASION RESISTANCE	ISO 10545-06	PEI ≥ IV
STAIN RESISTANCE	ISO 10545-14	GROUP 5
COEFFICIENT OF FRICTION	CERAMIC TILE INSTITUTE	DRY .74, WET .66
DYNAMIC COEFFICIENT OF FRICTION	ANSI A137.1:2012	WET .63

PLEASE VIEW ACTUAL MATERIAL BEFORE MAKING YOUR SELECTION, AS PRINTED IMAGES ARE ONLY REPRESENTATIVE. SHADE VARIATION IS TO BE EXPECTED.



ASH 3"X24"

COLORS



ASH 3"X24"



UMBER 3"X24"

Introducing Mill, an Italian-made porcelain tile available exclusively at Facings of America. Mill's unique color and tone variation creates visual interest while it's porcelain body gives it maximum durability for applications in both residential and commercial settings.

APPLICATIONS
 INTERIOR WALLS & FLOORS
 EXTERIOR WALLS & FLOORS
 STEAM SHOWERS

MILL GLAZED PORCELAIN STONEWARE

FLOOR TILES		CLASSIFICATION IN ACCORDANCE WITH EN 14411 ANNEXE G B la UGL		
PHYSICAL-CHEMICAL PROPERTIES	STANDARD OF TEST	VALUE		
THICKNESS	ISO 10545-02	3/8"	± 5%	CONFORMS
FLATNESS	ISO 10545-02	C.C ± .5% E.C ± .5% W ± .5%		
LENGTH AND WIDTH	ISO 10545-02	± .3% ± 1.5mm		
THICKNESS	ISO 10545-02	10mm		
WARPAGE	ASTM C 485	± .3% ± 1.5mm		
LINEARITY	ISO 10545-02	± .3% ± 1.5mm		
WATER ABSORPTION	UNI EN ISO 10545-03	E ≤ .1% B1a-GL		
CHEMICAL RESISTANCE	ISO 10545-13	CLASS A - LA - HA		
BREAK RESISTANCE	UNI EN ISO 10545-04	S ≥ 1300 N		
SURFACE ABRASION	ISO 10545-07	CLASS 3		
STAIN RESISTANCE	UNI EN ISO 10545-14	CLASS 5		
SKID RESISTENCE	DIN51097	≥ .42		
STATIC COEFFICIENT OF FRICTION	ASTM C 1028	R10		

PLEASE VIEW ACTUAL MATERIAL BEFORE MAKING YOUR SELECTION, AS PRINTED IMAGES ARE ONLY REPRESENTATIVE. SHADE VARIATION IS TO BE EXPECTED.



MINERAL NATURAL 12"X24"

COLORS



CINDER NATURAL 12"X24"



MINERAL NATURAL 12"X24"



SILICA NATURAL 12"X24"

Clayworx gracefully combines neutral colors with soft textures to achieve the perfect balance between classic and modern design. Its timeless look and durable qualities assure permanence and longevity.

ADDITIONAL SIZES

- 18"X18" NATURAL
- 24"X24" NATURAL
- 24"x24" NATURAL RECTIFIED
- 24"x24" GRIP 20MM RECTIFIED (MINERAL & SILICA)

SPECIALTY

- 4"X24" NATURAL BULLNOSE
- 24"X24" NATURAL STAIR TREAD
- 12"X12" NATURAL MOSAIC

APPLICATIONS

- INTERIOR FLOORS & WALLS
- EXTERIOR FLOORS & WALLS
- STEAM SHOWERS

CLAYWORX
FULL-BODY RECTIFIED PORCELAIN, 40% PRE-CONSUMER RECYCLED
NUMBER OF FACES: ASH:38, MINERAL:34, SILICA:30, CINDER:36
ACTUAL DIMENSIONS: 11.81"X23.62"

FLOOR TILES		CLASSIFICATION IN ACCORDANCE WITH EN 14411 ANNEXE G B la UGL		
PHYSICAL-CHEMICAL PROPERTIES	STANDARD OF TEST	VALUE		
THICKNESS	ISO 10545-2	± 5% ± .5MM	3/8"	CONFORMS
WATER ABSORPTION	ISO 10545-03	≤0.04%		
FROST RESISTANCE	ISO 10545-12	RESISTANT		
BENDING STRENGTH	ISO 10545-04	≥50 N/mm ²		
BREAKING STRENGTH	ISO 10545-04	≥2500 N		
ABRASION RESISTANCE	ISO 10545-06	≤145 mm ²		
THERMAL EXPANSION	ISO 10545-08	α≤7x10 ⁻⁶ °C ⁻¹		
THERMAL SHOCK RESISTANCE	ISO 10545-09	RESISTANT		
CHEMICAL RESISTANCE	ISO 10545-13	RESISTANT		
STAIN RESISTANCE	ISO 10545-14	RESISTANT		
SLIP RESISTANCE	DIN 51130	R10 (NATURAL)		
		R11 (GRIP)		
SLIP RESISTANCE	DIN 51097	CLASS A+B (NATURAL)		
		CLASS A+B+C (20MM)		
COEFFICIENT OF FRICTION	ASTM c1028	wet/dry≥0.60		
DYNAMIC COEFFICIENT OF FRICTION	ANSI 137.1:2012 (BOT 3000)	DCOF≥0.42		
WET PENDULUM TEST	AS/NZS 4586:2004	class X		
SHADING	ANSI A 137.1	V3		

PLEASE VIEW ACTUAL MATERIAL BEFORE MAKING YOUR SELECTION, AS PRINTED IMAGES ARE ONLY REPRESENTATIVE. SHADE VARIATION IS TO BE EXPECTED.



COLORS



ETON 8"X48" RT



DORCHESTER 8"X48" RT



STAFFORD 8"X48" RT

Introducing Village, a Spanish-made porcelain tile available exclusively at Facings of America. Village emulates the fluid movement and natural grain of real hardwood while offering the durability required for high-traffic residential settings and commercial applications.

APPLICATIONS
 INTERIOR WALLS & FLOORS
 EXTERIOR WALLS

VILLAGE PORCELAIN STONEWARE

FLOOR TILES	CLASSIFICATION IN ACCORDANCE WITH EN 14411 ANNEXE G B Ia UGL	
PHYSICAL-CHEMICAL PROPERTIES	STANDARD OF TEST	VALUE
WATER ABSORPTION	ISO 10545-03	0.10%
BREAKING STRENGTH	ISO 10545-04	1.800-2.400 N
MODULUS OF RUPTURE	ISO 10545-04	45-55 N/mm ²
RESISTANCE TO DEEP ABRASION	ISO 10545-06	110-130 mm ³
LINEAR THERMAL EXPANSION	ISO 10545-08	<7 x 10 ⁻⁶ °C
RESISTANCE TO THERMAL SHOCK	ISO 10545-09	RESISTS
MOISTURE EXPANSION	ISO 10545-10	< 0.1 mm/m
FROSTS RESISTANCE	ISO 10545-12	RESISTS
CHEMICAL RESISTANCE	ISO 10545-13	CONFORMS TO STANDARD
STAIN RESISTANCE	ISO 10545-14	GROUP 5
DYNAMIC COEFFICIENT OF FRICTION	ANSI A137.1-2012	0.76

PLEASE VIEW ACTUAL MATERIAL BEFORE MAKING YOUR SELECTION, AS PRINTED IMAGES ARE ONLY REPRESENTATIVE. SHADE VARIATION IS TO BE EXPECTED.



COLORS



PERLA NATURAL 30"X30" RT
PERLA SATIN 30"X30" RT

Introducing Atlantic, a Spanish-made porcelain tile available exclusively at Facings of America. Atlantic's subtle variation in color creates a smooth and delicate appearance while its porcelain body gives it maximum durability for applications in both residential and commercial settings.

ADDITIONAL SIZES
15"X30" RT

APPLICATIONS
INTERIOR WALLS & FLOORS
EXTERIOR WALLS

SPECIALTY
3.5"X30" BULLNOSE BASEBOARD RT
3.5"X30" CUT BASEBOARD RT
6"X30" RISER
12"X30" BULLNOSE STAIR TREAD RT
12"X30" CUT STAIR TREAD RT
12"X12" BULLNOSE CORNER PIECE RT
12"X12" CUT CORNER PIECE RT

ATLANTIC

PORCELAIN STONEWARE

FLOOR TILES	CLASSIFICATION IN ACCORDANCE WITH EN 14411 ANNEXE G B la UGL	
PHYSICAL-CHEMICAL PROPERTIES	STANDARD OF TEST	VALUE
WATER ABSORPTION	ISO 10545-03	0.10%
BREAKING STRENGTH	ISO 10545-04	1.800-2.400 N
MODULUS OF RUPTURE	ISO 10545-04	45-55 N/mm ²
RESISTANCE TO DEEP ABRASION	ISO 10545-06	110-130 mm ³
LINEAR THERMAL EXPANSION	ISO 10545-08	<7 x 10 ⁻⁶ °C
RESISTANCE TO THERMAL SHOCK	ISO 10545-09	RESISTS
MOISTURE EXPANSION	ISO 10545-10	< 0.1 mm/m
FROSTS RESISTANCE	ISO 10545-12	RESISTS
CHEMICAL RESISTANCE	ISO 10545-13	CONFORMS TO STANDARD
STAIN RESISTANCE	ISO 10545-14	GROUP 5
DYNAMIC COEFFICIENT OF FRICTION	ANSI A137.1-2012	0.62
STATIC COEFFICIENT OF FRICTION	ASTM C1028-07	AS RECEIVED
		AFTER CLEANING
		DRY - 0.78, WET - 0.64
		DRY - 0.78, WET - 0.65

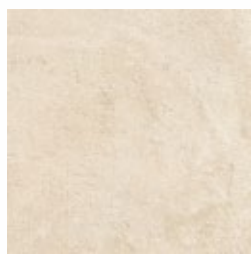
PLEASE VIEW ACTUAL MATERIAL BEFORE MAKING YOUR SELECTION, AS PRINTED IMAGES ARE ONLY REPRESENTATIVE. SHADE VARIATION IS TO BE EXPECTED.



COLORS



MANHATTAN 24"X24"



STATEN ISLAND 24"X24"



BRONX 24"X24"

Introducing City, an Italian-made porcelain tile available exclusively at Facings of America. City blends the look of an urban loft concrete floor with the versatility of porcelain tile, making it suitable for commercial and residential applications.

ADDITIONAL SIZES

- 12"X24" RT NATURAL
- 18"X18" NATURAL
- 18"X36" RT NATURAL
- 9"X36" RT NATURAL
- 36"X36" RT NATURAL
- 36"X36" RT POLISHED
- 24"X24" RT NATURAL
- 24"X24" RT POLISHED
- 24"X24" TEXTURED (NOT AVAILABLE IN STATEN ISLAND)
- 12"X12", 2-1/2"X2-1/2" MOSAIC RT NATURAL

SPECIALTY

- 12"X14" STAIR TREAD RT NATURAL
- 14"X14" CORNER STAIR TREAD RT NATURAL
- 6"X12" STAIR TREAD TEXTURED
- 4"X18" STAIR TREAD KIT NATURAL

APPLICATIONS

- INTERIOR FLOORS & WALLS
- EXTERIOR WALLS
- EXTERIOR FLOORS (TEXTURED)

TRIM

- 4"X24" BULLNOSE NATURAL
- 4"X24" BULLNOSE RT NATURAL
- 4"X24" BULLNOSE RT POLISHED
- 3/8"X12" LINER RT NATURAL
- 3/8"X3/8" CORNER

CITY COLORED BODY PORCELAIN TECHNOLOGY

FLOOR TILES	CLASSIFICATION IN ACCORDANCE WITH ISO 13006-G, EN 14411-G, ANSI 137.1, P1-CLASS	
PHYSICAL-CHEMICAL PROPERTIES	STANDARD OF TEST	MEAN VALUE
SLIGHT VARIATION	ANSI 137.1	V2
STAIN RESISTANCE	UNI EN ISO 10545.14	≤ 6 (10 - 6/K)
FROST RESISTANCE	UNI EN ISO 10545.12	RESISTANT
CHEMICAL RESISTANCE	UNI EN ISO 10545.13	RESISTANT

NON-SLIP

PHYSICAL-CHEMICAL PROPERTIES	STANDARD OF TEST	MEAN VALUE
NON-SLIP CLASSIFICATION	DIN 51130	R9
	BCR-TORTUS	≥ 0,40

PLEASE VIEW ACTUAL MATERIAL BEFORE MAKING YOUR SELECTION, AS PRINTED IMAGES ARE ONLY REPRESENTATIVE. SHADE VARIATION IS TO BE EXPECTED.



COLORS



BEIGE 12"X24"



GOLD 12"X24"



GREY 12"X24"

Introducing Duro, an Italian-made porcelain tile available exclusively at Facings of America. Duro elegantly pairs the beauty of natural limestone with the durability of porcelain, making it suitable for residential and commercial applications.

ADDITIONAL SIZES

12"X12"
 18"X18"
 12"X24" RT
 12"X12", 2"X2" MOSAIC
 12"X12", 1"X3" BRICK MOSAIC

APPLICATIONS

INTERIOR WALLS & FLOORS
 EXTERIOR WALLS

TRIM

3"X18" BULLNOSE
 4"X24" BULLNOSE

DURO

PORCELAIN STONEWARE

FLOOR TILES	CLASSIFICATION IN ACCORDANCE WITH EN 14411 ANNEXE G B la UGL	
PHYSICAL-CHEMICAL PROPERTIES	STANDARD OF TEST	VALUE
FLATNESS	ISO 10545-02	C.C ± .5% E.C ± .5% W ± .5%
LENGTH AND WIDTH	ISO 10545-02	E= ± .6% F= ± .5%
THICKNESS	ISO 10545-02	F= ± .5%
STRAIGHTNESS	ISO 10545-02	F= ± .5%
SQUARENESS	ISO 10545-02	F= ± .6%
WATER ABSORPTION	UNI EN ISO 10545-03	≤ .5%
CHEMICAL RESISTANCE	ISO 10545-13	CLASS B MIN (UGL)
BREAK RESISTANCE	UNI EN ISO 10545-04	S ≥ 1300 N R ≥ 35N/MM ²
DEEP SCRATCH RESISTANCE	ISO 10545-06	≤ 175 MM ³
STAIN RESISTANCE	UNI EN ISO 10545-14	CLASS 3 MIN
SLIP RESISTANCE	DIN51130	CLASSIFICATION R R9
STATIC COEFFICIENT OF FRICTION	ASTM C 1028	> .60

PLEASE VIEW ACTUAL MATERIAL BEFORE MAKING YOUR SELECTION, AS PRINTED IMAGES ARE ONLY REPRESENTATIVE. SHADE VARIATION IS TO BE EXPECTED.

— EST 1967 —
FACINGS
 —
 OF AMERICA



COLORS



FIBER 12"X24" RT



KNIT 12"X24" RT

Introducing Woven, an American-made porcelain tile available exclusively at Facings of America. Woven is characterized by a light and original graphic design reminiscent of woven fabric. Its versatility and durability make it suitable for residential and commercial settings.

ADDITIONAL SIZES
24"X24" RECTIFIED
8"X24" RECTIFIED

TRIM
3"X12" SURFACE BULLNOSE RECTIFIED

APPLICATIONS
INTERIOR WALLS & FLOORS
EXTERIOR WALLS & FLOORS
STEAM SHOWERS
POOLS & SPAS

SPECIALTY
12"X12" BASKETWEAVE MOSAIC RECTIFIED
10"X24" HERRINGBONE MODULUS RECTIFIED

WOVEN

COLORED BODY GLAZED PORCELAIN

40% RECYCLED CONTENT PRECONSUMER

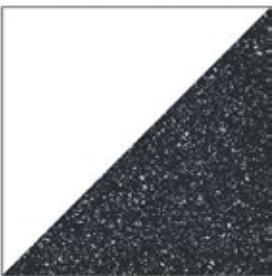
FLOOR TILES		
PHYSICAL-CHEMICAL PROPERTIES	STANDARD OF TEST	VALUE
WATER ABSORPTION	ASTM C373	≤0.05%
BREAKING STRENGTH	ASTM C648	425 LBF (AVERAGE VALUE)
SURFACE ABRASION	ASTM C1027	FIBER: PEI 4, OTHER COLORS: PEI 5
CHEMICAL RESISTANCE	ASTM C650	A RESISTANT
STAIN RESISTANCE	ASTM C1378	A RESISTANT
RESISTANCE TO FREEZE	ASTM C1026	RESISTANT
DYNAMIC COEFFICIENT OF FRICTION	NATURAL FINISH ≥ 0.42	ANSI A137.1
THICKNESS	3/8" 10 mm	
NOMINAL DIMENSIONS	ASTM C499	MAX ± 1.5%
SHADE VARIATION	V2	

PLEASE VIEW ACTUAL MATERIAL BEFORE MAKING YOUR SELECTION, AS PRINTED IMAGES ARE ONLY REPRESENTATIVE. SHADE VARIATION IS TO BE EXPECTED.

— EST 1967 —
FACINGS
—
OF AMERICA



COLORS



BLOK 8"X8"



MARAH 8"X8"



KARAN 8"X8"



TULIS 8"X8"



BUKI 8"X8"

Introducing Mala, an Italian-made glazed ceramic tile inspired by traditional Indian block prints.
 Mala is characterized by unique playful and colorful patterns.
 Its versatility and durability make it suitable for residential and commercial settings.

APPLICATIONS
 INTERIOR WALLS & FLOORS
 EXTERIOR WALLS & FLOORS

MALA GLAZED CERAMIC STONEWARE

FLOOR TILES	CLASSIFICATION IN ACCORDANCE WITH EN 14411 ANNEXE G B la UGL		
PHYSICAL-CHEMICAL PROPERTIES	STANDARD OF TEST	VALUE	
THICKNESS	ISO 10545-02	3/8"	± .5% CONFORMS
SIDE STRAIGHTNESS	ISO 10545-02	± .5% CONFORMS	
CORNER STRAIGHTNESS	ISO 10545-02	± .6% CONFORMS	
FLATNESS	ISO 10545-02	± .5% CONFORMS	
LENGTH AND WIDTH	ISO 10545-02	± .5% CONFORMS	
WATER ABSORPTION	ISO 10545-03	± .5% CONFORMS	
BREAK RESISTANCE	ISO 10545-04	S ≥ 1300 N CONFORMS	
MODULUS OF RUPTURE	ISO 10545-04	≥ 35 N/mm ² CONFORMS	
CRAZING RESISTANCE	ISO 10545-11	REQUIRED CONFORMS	

PLEASE VIEW ACTUAL MATERIAL BEFORE MAKING YOUR SELECTION, AS PRINTED IMAGES ARE ONLY REPRESENTATIVE.
 SHADE VARIATION IS TO BE EXPECTED.



ARGENT NATURAL 24"X48"

COLORS



ARGENT NATURAL 24"X48"

Echo features a clean concrete aesthetic and is characterized by a soft color palette and subtle, yet realistic movement. Versatility and durability make Echo suitable for both residential and commercial settings.

ADDITIONAL SIZES

- 12"X24", 24"X24" NATURAL
- 12"X24", 24"X24" NATURAL RECTIFIED
- 12"X24", 24"X24" POLISHED RECTIFIED
- 12"X24", 24"X24" TEXTURED R11
- 24"X48" POLISHED RECTIFIED
- 24"X24" RT 2CM R11 (CARBON, IRON, & DUSK ONLY)

SPECIALTY

- 2"X2" NATURAL MOSAIC
- 3"X24" NATURAL SURFACE BULLNOSE
- 8"X24" NATURAL WALL TILE ARGENT/IRON RECTIFIED
- 8"X24" NATURAL WALL TILE CARBON/IRON RECTIFIED
- 8"X24" NATURAL WALL TILE DUSK RECTIFIED
- 8"X24" NATURAL WALL TILE STONE RECTIFIED
- 12"X24" NATURAL STEP WITH SBN & GROOVE

APPLICATIONS

- INTERIOR WALLS & FLOORS
- EXTERIOR WALLS & FLOORS
- STEAM SHOWERS
- POOLS & SPAS

ECHO

COLOR BODY RECTIFIED PORCELAIN

NUMBER OF FACES: 5

ACTUAL DIMENSIONS: 23.62"X47.24"

FLOOR TILES		CLASSIFICATION IN ACCORDANCE WITH EN 14411 ANNEXE G B la UGL	
PHYSICAL-CHEMICAL PROPERTIES	STANDARD OF TEST	REQUIREMENTS	AVERAGE RATING
THICKNESS	ISO 10545-02	3/8" ± 5%	CONFORMS
WATER ABSORPTION	ISO 10545-03	≤ .5%	CONFORMS
CHEMICAL RESISTANCE	ISO 10545-13	CLASS UB MIN (UGL)	CONFORMS
BREAK RESISTANCE	ISO 10545-04	S ≥ 1300 N	CONFORMS
		R ≥ 35N/MM ²	
DEEP SCRATCH RESISTANCE	ISO 10545-06	≤ 175 MM ³	CONFORMS
THERMAL SHOCK RESISTANCE	ISO 10545-09	NO VISIBLE DEFECT	CONFORMS
FROST RESISTANCE	ISO 10545-12	RESISTANT	CONFORMS
STAIN RESISTANCE	ISO 10545-14	CLASS 3 MIN	CONFORMS
SLIP RESISTANCE	DIN 51130	CLASSIFICATION R	R9
DYNAMIC COEFFICIENT OF FRICTION	ANSI A137.1:2012	≥ .42 WET	0.30

PLEASE VIEW ACTUAL MATERIAL BEFORE MAKING YOUR SELECTION, AS PRINTED IMAGES ARE ONLY REPRESENTATIVE. SHADE VARIATION IS TO BE EXPECTED.

COLORS



PURE 6X24 GLOSSY



WISDOM GREY 6X24 GLOSSY



SYMPHONY BLUE 6X24 GLOSSY



ESSENTIAL GREY 6X24 GLOSSY



BALANCE 6X24 GLOSSY



JET BLACK 6X24 GLOSSY

URBAN LIVING WALL IS A GLAZED PORCELAIN TILE.

THICKNESS: 8MM

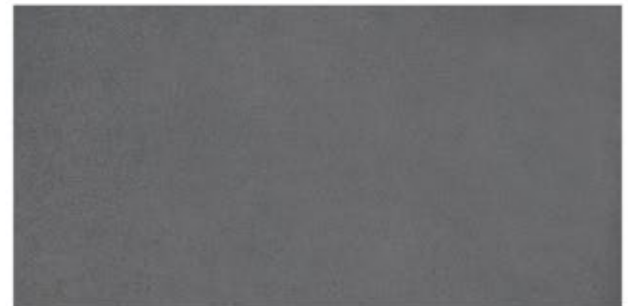
ADDITIONAL SIZES: 3X12

TRIM: 6X24 BULLNOSE

APPLICATIONS: INTERIOR AND EXTERIOR FLOORS AND WALLS



MIST GREY 12X24 MATTE



TITANIUM 12X24 MATTE

URBAN LIVING IS A RECTIFIED COLOR BODY PORCELAIN TILE.

THICKNESS: 10MM

ADDITIONAL SIZES: 24X48, 12X12 (MATTE & RAW ONLY), 24X24 (MATTE & RAW ONLY)

TRIM: 3X12 BULLNOSE (MATTE ONLY), 6X12 COVE BASE (MATTE ONLY)

SPECIALTY: 2X2 MOSAIC (MATTE & RAW ONLY)

APPLICATIONS: INTERIOR AND EXTERIOR FLOORS AND WALLS



COLORS



GRIGIO 24"X48"
12"X48"



SABBIA 24"X48"
12"X48"
24"X24"

Introducing Modcrete, an Italian-made rectified porcelain available at Facings of America. The concrete aesthetic and urban feel lend itself to both residential and commercial spaces. Modcrete is suitable for all interior surfaces, exterior walls, water features, and pool water lines.

ADDITIONAL SIZES

- 4"X12" RT NATURAL
- 4"X24" RT NATURAL
- 6"X24" RT NATURAL
- 24"X24" RT NATURAL
- 6"X12" RT TEXTURED
- 12"X12" RT TEXTURED
- 12"X24" RT TEXTURED
- 12"X12", 1"X1" MOSAIC

SPECIALTY

- 13"X48" STAIR TREAD RT NATURAL
- 13"X48" CORNER STAIR TREAD RT NATURAL
- 13"X13" CORNER STAIR TREAD RT NATURAL
- 24"X24" 20 MM PAVER ANTISLIP

APPLICATIONS

- INTERIOR WALLS & FLOORS
- EXTERIOR WALLS
- EXTERIOR FLOORS (TEXTURED)

TRIM

- 3"X24" BULLNOSE RT NATURAL

MODCRETE		PRESSED CERAMIC TILE		7.5% RECYCLED
				12X24 ONLY
				20% RECYCLED
FLOOR TILES		CLASSIFICATION IN ACCORDANCE WITH ISO 13006 ANNEX G-EN 14411 ANNEXE G B Ia UGL		
PHYSICAL-CHEMICAL PROPERTIES		STANDARD OF TEST		VALUE
FLATNESS	UNI EN ISO 10545/2		± .26% / ± 1.5 MM	
	ASTM C485 WARPAGE			
	CALIBRATED ± .75% (MAX ± .09 IN.)			
	RECTIFIED ± .40%		± .25%	
WATER ABSORPTION	UNI EN ISO 10545/3		COMPLIANT	
	≤ .5%			
	ASTM C373			
MODULUS OF RUPTURE	UNI EN ISO 10545/4		≥ 50N/MM ²	
BREAKING STRENGTH	UNI EN ISO 10545/4 ASTM C648		≥ 2000 N 700 LB	
FROST RESISTANCE	UNI EN ISO 10545/12 ASTM C-1026		UNAFFECTED	
CHEMICAL RESISTANCE TO HIGH AND LOW ACID AND BASIC CONCENTRATIONS	UNI EN ISO 10545/13 ASTM C-650		GAGLA-GHA UNAFFECTED	
STAIN RESISTANCE	UNI EN ISO 10545/14 CTI 81-7D		5 NO EVIDENT VARIATION	
SLIP RESISTANCE	DIN51130		NAT. R10	ANTISLIP R11
	DIN 51097		B (A+B)	C (A+B+C)
	ANSI A 137.1-2012		DRY: .69	DRY: .88
	DCOF (SECTION 9.6)		WET: .61	WET: .90
	B.C.R.A.		≥ .40	≥ .40

PLEASE VIEW ACTUAL MATERIAL BEFORE MAKING YOUR SELECTION, AS PRINTED IMAGES ARE ONLY REPRESENTATIVE. SHADE VARIATION IS TO BE EXPECTED.

EST 1967

FACINGS

OF AMERICA