



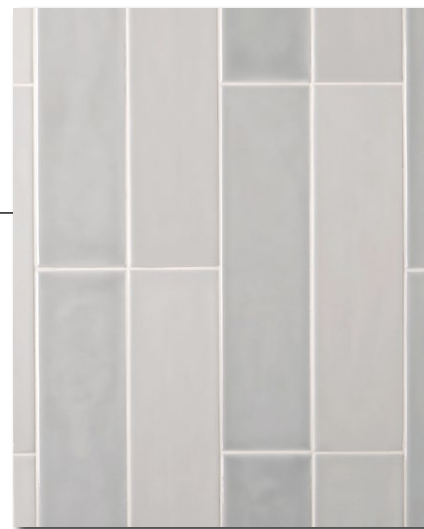
HABITAT

SERENE BEAUTY INSPIRED BY NATURE'S EMBRACE.

EST 1967

FACINGS

OF AMERICA



MULTI TONE GLAZE

Beautiful surroundings can evoke feelings of comfort, joy and peace. Invite these sentiments to any interior space with the Habitat Collection. Deep glossy glazes and soft matte finishes are available in an elegant tone-on-tone color palette. A full complement of field tile sizes, trim and moldings are available to suit traditional, transitional and contemporary designs.

HABITAT Multi Tone Glaze



Find out the product code simply by putting together the color and the item

Example: **ADHGC 825**

GLOSSY FINISH - SLIGHTLY UNDULATED SURFACE



CLOUD GLOSSY **ADHGC** ALABASTER GLOSSY **ADHGA** RIVER BLUE GLOSSY **ADHGR** LEAF GLOSSY **ADHGL** PEWTER GLOSSY **ADHGP** GRAPHITE GLOSSY **ADHGG**

MATTE FINISH - SLIGHTLY UNDULATED SURFACE



CLOUD MATTE **ADHMC** ALABASTER MATTE **ADHMA** RIVER BLUE MATTE **ADHMR** LEAF MATTE **ADHML** PEWTER MATTE **ADHMP** GRAPHITE MATTE **ADHMG**

FIELD TILES

UNDULATED



825 2.5"x5.1"



821 2.5"x10.3"



844 5.1"x5.1"

DECORATIVE ACCESSORIES



206 0.6"x10.3" Liner (One Overglazed Edge)



204 1"x10.3" Quarter Round



205 Beak

FIELD TILES

UNDULATED



825 2.5"x5.1"



821 2.5"x10.3"



844 5.1"x5.1"

DECORATIVE ACCESSORIES



206 0.6"x10.3" Liner (One Overglazed Edge)



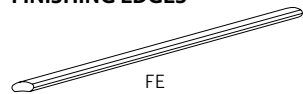
204 1"x10.3" Quarter Round



205 Beak

TRIMS

FINISHING EDGES



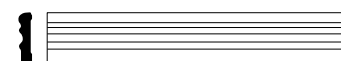
501 FE 0.4"x10.3"

500 FE Corner

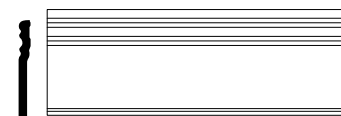


FE Corner

FINISHING TOUCHES



201 2"x10.3" Molding



809 4"x10.3" Base Board (Glazed Top Edge)

END CAPS



202



810

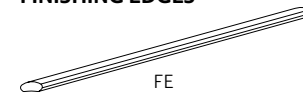
FRAME CORNERS



203

TRIMS

FINISHING EDGES



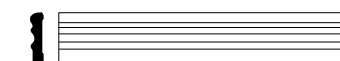
501 FE 0.4"x10.3"

500 FE Corner

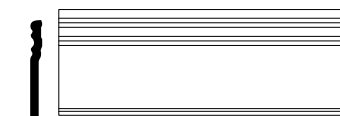


FE Corner

FINISHING TOUCHES



201 2"x10.3" Molding



809 4"x10.3" Base Board (Glazed Top Edge)

END CAPS



202



810

FRAME CORNERS



203

CLOUD GLOSSY **ADHGC**



ALABASTER GLOSSY **ADHGA** | ALABASTER MATTE **ADHMA**



RIVER BLUE GLOSSY **ADHGR**



LEAF GLOSSY **ADHGL**



PEWTER GLOSSY **ADHGP**



GRAPHITE GLOSSY **ADHGG**



CLOUD MATTE **ADHMC**



ALABASTER MATTE **ADHMA**



RIVER BLUE MATTE **ADHMR**



LEAF MATTE **ADHML**



GRAPHITE MATTE **ADHMG**



PEWTER MATTE **ADHMP**



CLOUD MATTE **ADHMC** | RIVER BLUE MATTE **ADHMR** | LEAF MATTE **ADHML**





FIELD TILES		
SIZE	SIZE SPECIFICATIONS	THICKNESS*
UNDULATED TILE		
2.5"x5.1"	2.520"x5.118" (64mm x 130mm)	0.295" (7.5mm)
2.5"x10.3"	2.520"x10.315" (64mm x 262mm)	0.303" (7.7mm)
5.1"x5.1"	5.118"x5.118" (130mm x 130mm)	0.303" (7.7mm)
DECORATIVE ACCESSORIES & FINISHING TOUCHES		
Liner (One Overglazed Edge) 0.6"x10.3"	0.630"x10.315" (16mm x 262mm)	0.354" (9mm)
Quarter Round 1"x10.3"	1.024"x10.315" (26mm x 262mm)	0.394" (10mm)
Molding 2"x10.3"	2.008"x10.315" (51mm x 262mm)	0.591" (15mm)
Base Board (Glazed Top Edge) 4"x10.3"	3.976"x10.315" (101mm x 262mm)	0.551" (14mm)

APPLICATIONS		
	SUITABLE RESIDENTIAL	SUITABLE COMMERCIAL
Bathroom Walls	YES	YES
Shower Walls	YES	YES
Kitchen Walls	YES	YES
Countertops	YES	NO
Fireplace Surrounds	YES	YES
Outdoor Cooking / Bar Spaces (Non Freeze-Thaw Climates)	YES	YES
Pool Waterlines / Water Fountains	NO	NO
Floors	NO	NO

PERFORMANCE CHARACTERISTICS		
	TEST METHOD ASTM / ISO	RESULT
Water Absorption	C-373 / 10545-3	Pass
Breaking Strength	C-648 / 10545-4	Pass
Stain Resistance	C-1378 / 10545-14	Resistant
Chemical Resistance	C-650 / 10545-13	Resistant
Facial Dimensions	C-499 / 10545-2	Pass
Range of Thickness	C-499 / 10545-2	Pass
Warpage	C-485 / 10545-2	Pass

*Thickness is understood as the highest point of the tile.

INSTALLATION	
GROUT JOINT RECOMMENDATION	SHADE VARIATION
1/8"	V3 - Moderate Variation
For Habitat Glossy tiles, please refer to our INSTALLATION & MAINTENANCE guidelines.	

CLEANING RECOMMENDATIONS
Routine with a non-abrasive/non-acidic, mild and PH neutral cleaner

CHARACTERISTICS	
Glaze	Solid with subtle movement and high color variation
Surface Sheen	Glossy and Matte
Texture	Slightly Undulated

Due to the nature of our tile, a certain amount of variation in color, shading, surface and texture are to be expected.

This collection is characterized by its shade variation. Some colors in the series have more variation than others. Expect shade variation between the individual field tiles and between field and trim within each color. Due to the shape of the pieces and the nature of production, this is especially true for variation between field and trims. Trim pieces like quarter rounds, finishing edges and other moldings may have more glaze pooling and different pooling effects than other pieces. Expect variation within each run, and from production to production. IT IS IMPORTANT TO BLEND TILE WITHIN EACH CARTON AND FROM MULTIPLE CARTONS DURING INSTALLATION. This is best achieved by laying out the material prior to installation.

— EST 1967 —

FACINGS

—
OF AMERICA