

EST 1967

FACINGS

OF AMERICA

BIJOUX COLLECTION

Glass Mosaics



BIJOUX COLLECTION

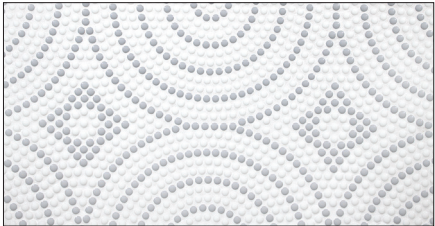
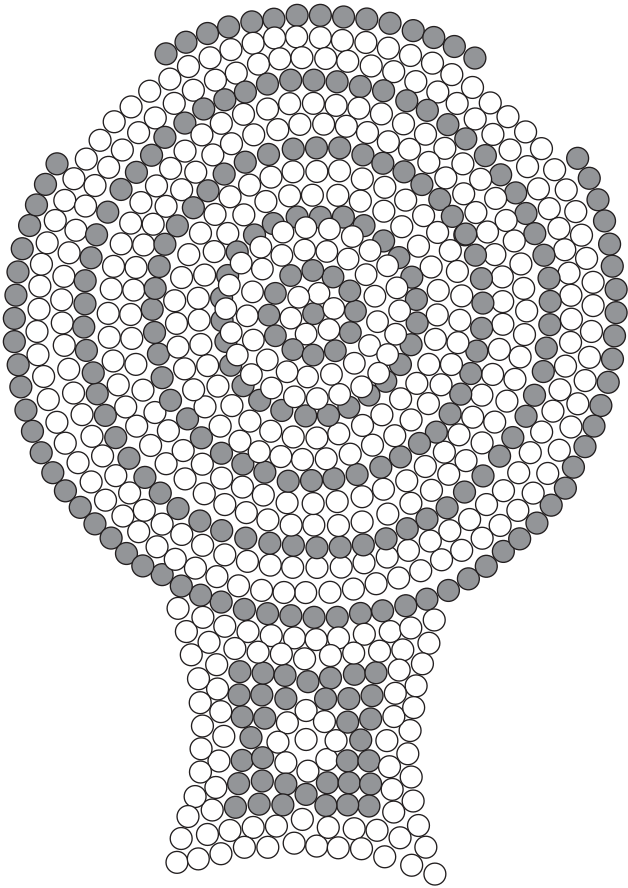
Glass Mosaics

RIVIERA PATTERN

FULL SHEET SIZE

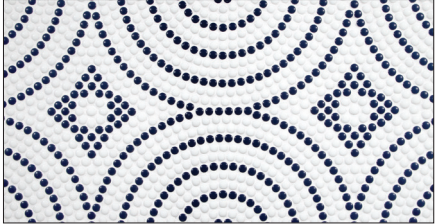
11.614"

19.488"



GBI-RI-WGG

White (Gloss), Grigio (Gloss)



GBI-RI-NBG

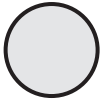
White (Gloss), Navy Blue (Gloss)

Each Sheet = 1.571 SF

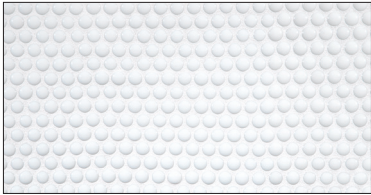
BIJOUX COLLECTION

Glass Mosaics

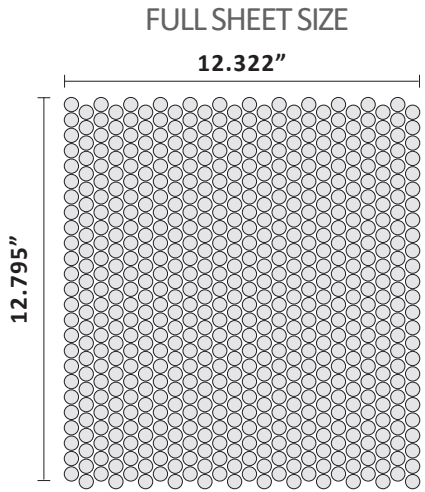
MINI BUBBLES



CHIP SIZE: 0.5"
JOINT WIDTH: Micro-Joint
THICKNESS: 1/4"
MATERIAL: Recycled Glass



GBI-BB-WHG
White (Gloss)



Each Sheet = 1.12 SF

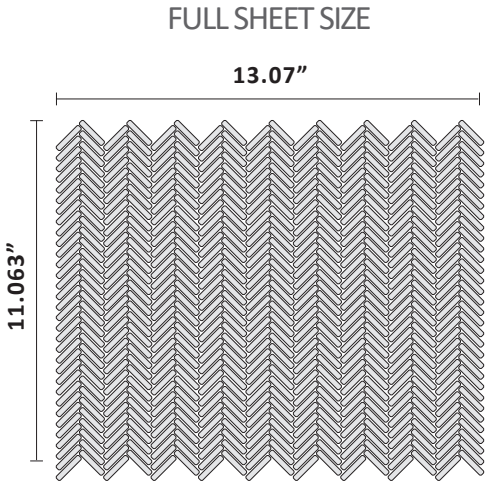
MINI HERRINGBONE



CHIP SIZE: 0.1875" x 1"
JOINT WIDTH: Micro-Joint
THICKNESS: 1/4"
MATERIAL: Recycled Glass



GBI-HB-WHG
White (Gloss)



Each Sheet = 1.004 SF



Frost Resistant



Showers & Pools



Commercial Foot Traffic



Eco-friendly

TECHNICAL SPECS

Glass Mosaic Collection

Features	Test Method	Requirements	Results
Facial Defects	ANSI A 137.2 7.1	The samples shall be within tolerance for facial defects	Complied
Structural Defects	ANSI A 137.2 7.1	The samples shall be within tolerance for structural defects	Complied
Thickness	ASTM C499	≤ 0.76mm	0.43mm
Nominal Size	ASTM C499	± 10.00%	-2.54% ~ -0.04%
Caliber Range	ASTM C499	± 5.00%	-1.10% ~ -1.14%
Static Coefficient of Friction	ASTM C1028	As Reported	Dry: 0.83 Wet: 0.61
Dyanamic Coefficient of Friction	Refer to ASTM C1028	As Reported	Dry: 0.60 Wet: 0.55
Water Absorption	ASTM C373	≤ 0.5%	0.03% ~ 0.05%
Acetic Acid, 3% and 10% (v/v)	ASTM C650	As Reported	Not Affected
Ammonium Chloride, 100g/L	ASTM C650	As Reported	Not Affected
Citric Acid Solution, 30g/L and 100g/L	ASTM C650	As Reported	Not Affected
Lactic Acid, 5% (v/v)	ASTM C650	As Reported	Not Affected
Phosphoric Acid 10% (v/v)	ASTM C650	As Reported	Not Affected
Sulfamic Acid, 30g/L and 100g/L	ASTM C650	As Reported	Not Affected
Sodium Hypochlorite Solution, 20mg/L	ASTM C650	As Reported	Not Affected
Hydrochloric Acid Solution 3% and 18% (v/v)	ASTM C650	As Reported	Not Affected
Potassium Hydroxide, 30g/L and 100g/L	ASTM C650	As Reported	Not Affected
Chemical Resistance Class	ANSI A 137.2 5.2.3.5	As Reported	Class A
Waterproof Ink Black	ASTM C1378	As Reported	Not Affected
Washable Ink	ASTM C1378	As Reported	Not Affected
Potassium Permanganate Solution, 1%	ASTM C1378	As Reported	Not Affected
Methylene Blue Solution, 1%	ASTM C1378	As Reported	Not Affected
Stain Resistance Class	ANSI A 137.2 5.2.3.6	As Reported	Class A
Linear Thermal Expansion	ASTM C372	As Reported	N/A
Moisture Expansion	ASTM C370	As Reported	N/A
Thermal Shock Resistance	ANSI A 137.2 7.9	Pass	Fully Resistant
Frost Resistance	ASTM C1026	Pass	Fully Resistant

INSTALLATION & CARE

Glass Mosaic Collection

Please Read Carefully Before Beginning Installation

Installing glass tile involves some basic procedures that differ from installing ceramic or stone tile. Following these procedures will ensure a successful installation. This guide covers installation of glass tile in interior floors, walls, and showers.

Preparation

Glass tile must be installed over a properly prepared substrate - a clean, sound, flat surface that is free of cracks, contaminants, sealers, paint or adhesives. This is one of the most important factors in ensuring a good installation.

Approved surfaces for Setting:

- Concrete Slabs
- Well-cured mortar beds (ANSI A108.1B Standards-cured a minimum of 7 Days)
- Cement Board/backer units (CBU) to ANSI A118.9 Standards (Note: An ANSI A108A-2.1.8 membrane is required behind all CBU installations in wet areas.)
- Gypsum board (dry areas only) installed to ASTM C1396 or ASTM C1396M-04 Standards.

Do NOT install glass tile directly over Particle board or Plywood!

Our glass tiles are backed on mesh with waterproof glue.

Glass Mosaic Installation

- This is a hand made product. Check color placement before installing. Maintain sheet orientation.
 - Work in areas of 6 - 10 SF. Key in thinset with flat edge of trowel.
 - Use a 1/8" V-Notch trowel to achieve uniform thickness. Lightly knock down the tops of combed thin-set with flat edge of trowel until smooth.
 - Gently push tile into the thinset, paying attention to sheet edges. For patterned tile, make sure each tile is placed exactly where it interlocks with the adjacent tile.
 - Use a beating block to achieve uniform flatness and full bond.
 - Promptly clean excess setting materials from tile surface with a damp sponge. Follow manufacturer's recommended stated cure times for setting.
-

INSTALLATION & CARE

Glass Mosaic Collection

Grouting

During the grouting process these may become more noticeable if grout residue is left to cure on the surface. A soft bristle brush may be used to remove the excess grout from the surface during the initial cleaning phase. It is critical to remove all excess grout from the surface of the tile before the grout is allowed to fully cure.

- Pre-wash tile with damp sponge to remove 100% of glue or other residue before grouting.
- Apply grout with a rubber float making sure joints are filled completely.
- Use a damp sponge to remove excess grout, leaving only a slight haze residue.
- Wait 30-40 minutes before polishing off haze residue with a clean microfiber cloth.
- Do this as work progresses while grout is fresh. Wait 12 hours before performing a 'final polish' to remove any residual haze with a dry terry or microfiber cloth.

Recommended Setting Material

BOSTIK Reflex® Ultra-Premium Latex-Modified Thin Set Mortar (Dry Areas).

Recommended Grout

Use any non-sanded grout.

Cleaning

Both the Bijoux and Café collections have been tested by the TCNA and have passed all tests for chemical resistance, surface abrasion, stain resistance, and breaking strength. We have found that under normal residential traffic, warm water is sufficient to clean the surface. Keep in mind that this product is rated for Commercial flooring!

Here are the ways to clean the surface. Always start out with the mildest method:

- Warm Water alone with a sponge mop
- Warm Water and mild dishwashing liquid, such as Dawn, with a sponge mod
- Wet a magic eraser and rub the surface until clean

Facings of America provides product information concerning installation procedures and maintenance practices to assist each of our customers in making selection, usage, installation, and maintenance decisions. Customer's selection and usage of Facings of America tile products and the installation procedure and maintenance practice employed by each customer are outside the direction and control of Facings of America and are strictly and completely the choice and responsibility of each customer and their installer. Facings of America does not warranty any product for any specific use, nor any installation procedure or maintenance practice, and expressly disclaims all asserted claims after installation.
